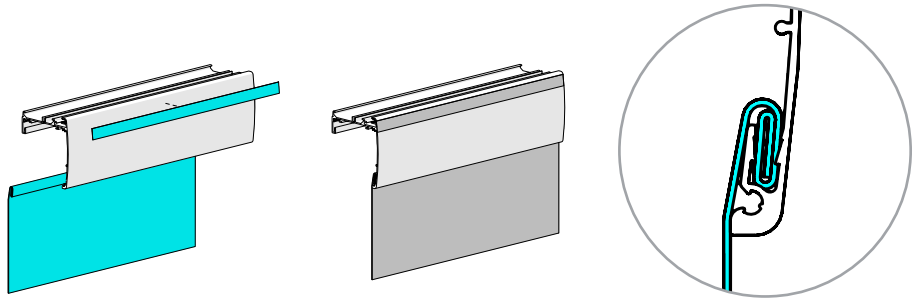


ASSEMBLY

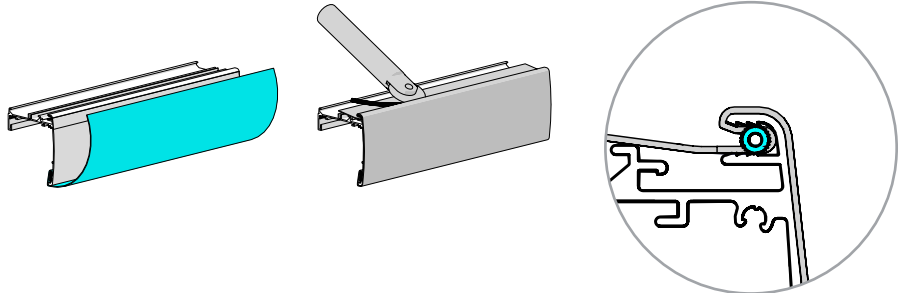
STEP 1.

Attach DS Tape to the semi cassette. Slide in fabric with flat spline.



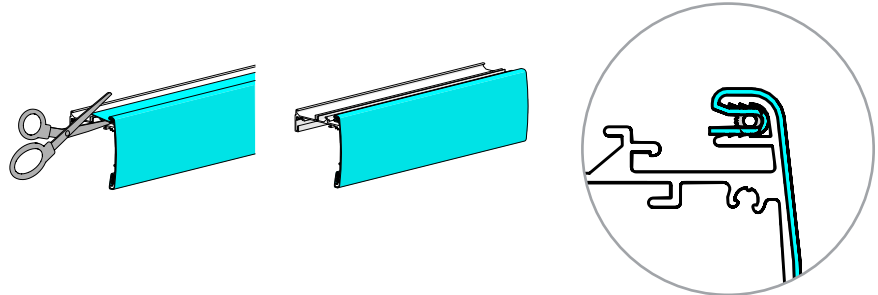
STEP 2.

Pull fabric over semi cassette face. Applied DS Tape stops the fabric stretching. Use spline roller tool to embed round spline and fabric in semi cassette.



STEP 3.

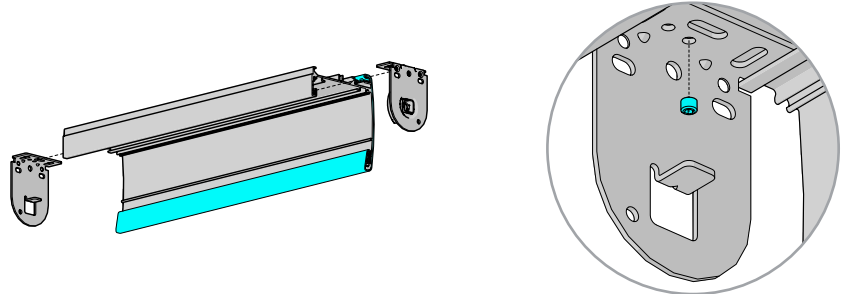
Trim any excess fabric.



STEP 4.

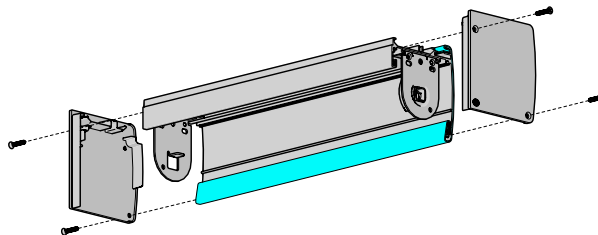
Attach brackets to semi cassette. Fasten in place with set screw (grub screw).

[Tap bracket with 4mm drill as required]



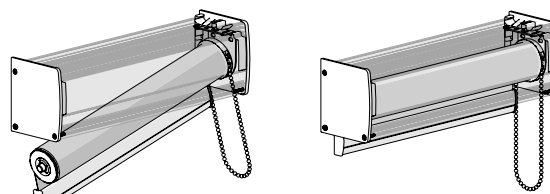
STEP 5.

Attach end caps. Fasten with screws provided.



STEP 6.

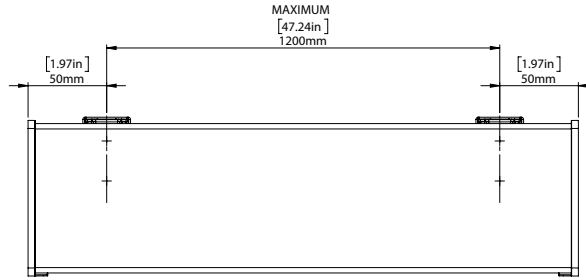
Install roller shade.



INSTALLATION

STEP 1.

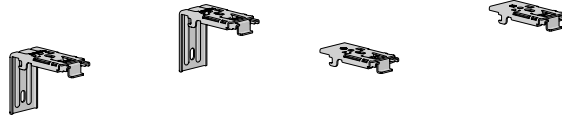
Measure correct spacing



STEP 2.

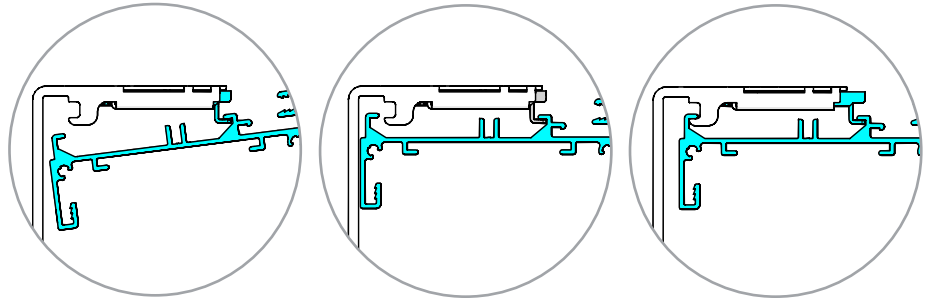
Install brackets

FACE FIX | WALL MOUNT TOP FIX | CEILING MOUNT



STEP 3.

Attach semi cassette assembly to brackets



Finished installation

