

4000 NET

SOLAR SCREEN



TEXTSTYLE

4000 NET

4000 NET Solar Screen fabrics offer a stylish and modern aesthetic for window treatments that minimize the negative effects of the sun, while preserving outward visibility.

4000 NET is similar in appearance to 3000 NET but made of a heavier weight yarn making it ideal for commercial applications as well as exterior treatments.

FEATURES

- A unique manufacturing process delivers technically superior fabrics that are backed by a limited lifetime warranty
- Environmentally friendly and safe
- Flame Retardant
- Available in two openness factors - 3%, 5%
- Available in 13 colors
- Versatile – can be used in roller shades and panel track applications

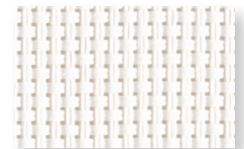
COLORS



NPE1 DOVE/DOVE



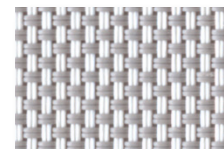
NPE2 DOVE/SAND



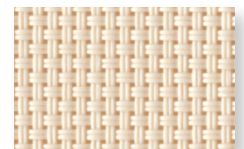
N001 WHITE/WHITE



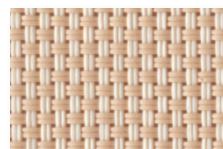
N002 WHITE/BEIGE



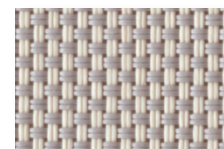
N003 WHITE/GRAY



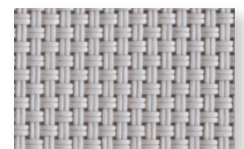
N201 BEIGE/BEIGE



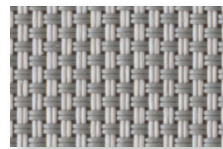
N202 BEIGE/SABLE



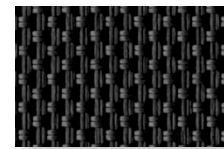
N203 BEIGE/GRAY



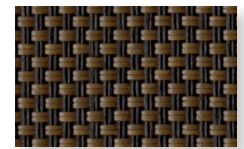
N301 GRAY/GRAY



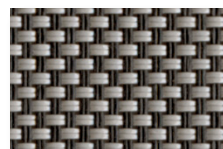
N302 GRAY/DARK GRAY



N901 CHARCOAL/CHARCOAL



N902 CHARCOAL/BRONZE



N903 CHARCOAL/GRAY

Bringing Fabrics to Life

USA | AUSTRALIA | EUROPE textstyle.com

A DIVISION OF
**ROLLEASE
ACMEDA**

©2020 Textstyle

4000 NET

SOLAR SCREEN



SPECIFICATIONS

| | 3% | 5% |
|-------------------------|--|--|
| Series | 4000 NET | |
| Composition | 27% Polyester, 73% PVC | |
| Openness Factor | Average 3% | Average 5% |
| Weight | 16.07oz/yd ² (545 g/m ²) | 15.35 oz/yd ² (520 g/m ²) |
| Thickness | 0.029in (.75mm) | 0.027 in (0.70mm) |
| Colorfastness | Grade 8 | |
| Average length | 33 yd/roll (30m) | |
| Width | 98.4" (2.5m), 118" (3m) | |
| Cutting | Cold, Crush, and Ultrasonic | |
| Welding | 248°F (120°C) to 284°F (140°C) | |
| Railroadable | Yes | |
| Cleaning | Wipe clean with warm soapy water and damp cloth. | |
| Environmental Standards | Greenguard Gold, Oeko-Tex Standard 100 | |
| Fire Classifications | NFPA 701, M1, B1, B2, CA Title 19 | |

THERMAL AND OPTICAL FACTORS | BASED ON 5% OPENNESS

| CODE | Thermal Factors | | | | | | Optical Factors |
|------------------------|-----------------|----|----|---------------------|---------|---------|-----------------|
| | Ts | Rs | As | Shading Coefficient | | | |
| | | | | 1/8" CL | 1/4" CL | 1/4" HA | Tv |
| N001 White/White | 16 | 67 | 17 | 0.32 | 0.33 | 0.32 | 11 |
| N002 White/Beige | 14 | 58 | 28 | 0.39 | 0.38 | 0.34 | 9 |
| N003 White/Gray | 10 | 45 | 45 | 0.47 | 0.46 | 0.38 | 8 |
| N201 Beige/Beige | 14 | 51 | 35 | 0.44 | 0.43 | 0.37 | 11 |
| N202 Beige/Sable | 12 | 47 | 41 | 0.46 | 0.45 | 0.38 | 9 |
| N203 Beige/Gray | 10 | 39 | 51 | 0.51 | 0.49 | 0.40 | 8 |
| N301 Gray/Gray | 8 | 31 | 61 | w0.56 | 0.54 | 0.43 | 7 |
| N302 Gray/Dark Gray | 8 | 23 | 69 | 0.62 | 0.59 | 0.45 | 8 |
| N901 Charcoal/Charcoal | 6 | 5 | 89 | 0.73 | 0.69 | 0.51 | 6 |
| N902 Charcoal/Bronze | 6 | 7 | 87 | 0.72 | 0.68 | 0.50 | 6 |
| N903 Charcoal/Gray | 6 | 12 | 82 | 0.74 | 0.69 | 0.52 | 6 |



FR



LEAD FREE



PHTHALATE FREE



FRAGRANCE FREE



ANTI-BACTERIAL



ENERGY SAVING

Bringing Fabrics to Life

USA | AUSTRALIA | EUROPE texstyle.com



©2020 Texstyle