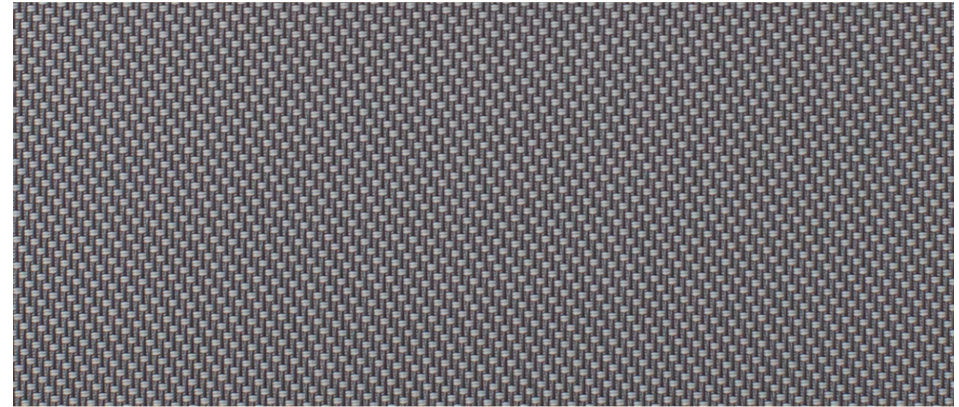


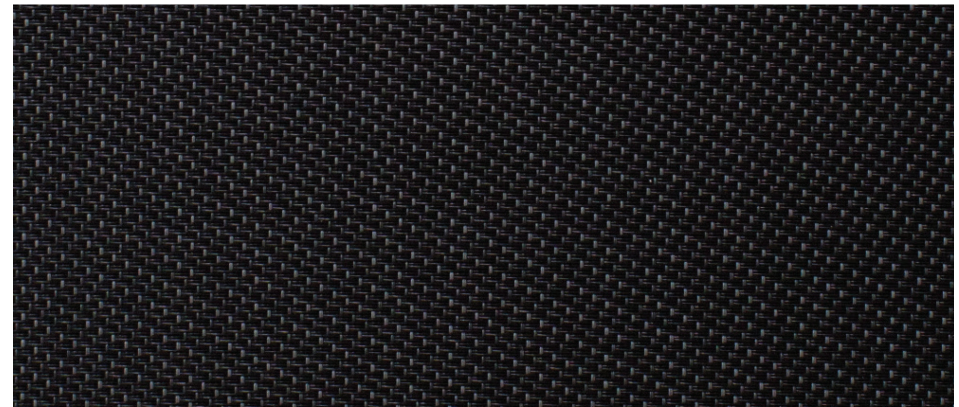


SHADEVIEW 10D

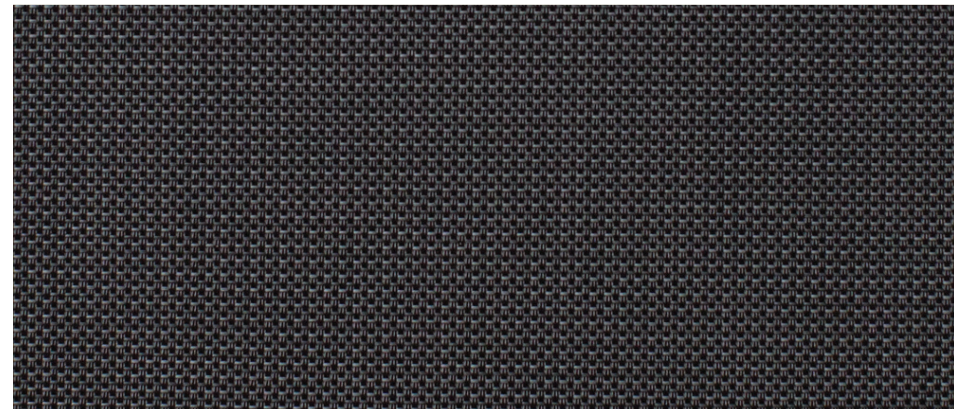
BRAND FABRIC



10D - 1% *Reversible Twill*



10D - 3% *Reversible Twill*



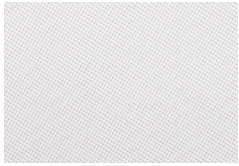
10D - 5-6%



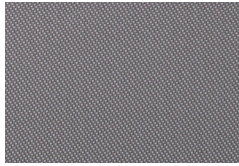
SHADES BY MATISS

www.shadesbymatiss.com | T. 800 493 2040 | email: info@shadesbymatiss.com

1% OPENNESS

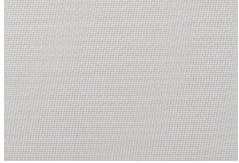


White Gull



Greymist Onyx

3% OPENNESS



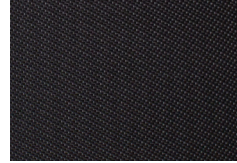
White



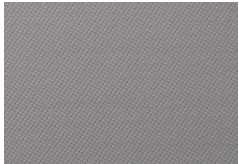
White Gull



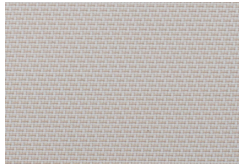
Greymist Onyx



Black Onyx



Greymist Dusk*



White Linen*

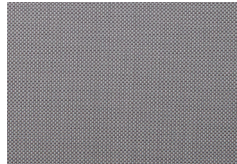
5-6% OPENNESS



White



White Gull



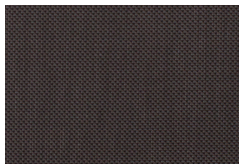
Greymist Onyx



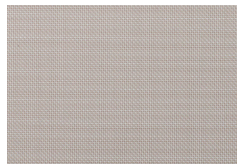
Black Onyx



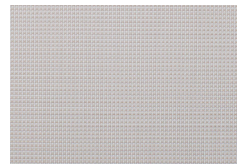
Black Gray*



Black Brown*



White Alabaster*



White Linen*

* Special order item/Minimum quantity may be required

Specifications

Product Description: Shadeview 10D is a vinyl coated polyester fabric. This beautifully woven fabric is durable yet lightweight in nature for any interior application including roller shades, fixed screens, and panel tracks. These fabrics help improve energy efficiency, mood from natural sunlight, improve visibility during the day, and reduce risks of adverse effects caused by solar heat and light.

STYLE	Reversible Twill		
	10D 1%	10D 3%	10D 5%
Openness Factor	1%	3%	5%
UV Blockage	99%	97%	95%
Weight, oz/yd²	17.0	15.1	14.1
Thickness, inches	0.0333	0.0311	0.0281
Weatherability	G154: Trace Discoloration		
Mildew Resistance	G21 - 13: No Growth		
Fabric Composition	PVC: 85%, Polyester: 15%		
Suggested Fabrication Methods	Crush Cut, Laser, Cold Knife, RF Weld, Railroading		
Ideal Uses	Roman Shades, Roller Shades, Sheers, Screens		
Roll Length	Approx. 30 linear yds		
Warranty	10 Year Exterior 10 Year Interior		
Environmental Certification	Greenguard Gold		
Fabric Width	96"		

REACH Compliant

Regulated by Registration, Evaluation, Authorization and Restriction of Chemicals. REACH places greater responsibility on industry to manage the risks that chemicals may pose to human health and the environment.

Children's Toy Act

Does not contain harmful phthalates listed under Section 108 of the Consumer Product Safety Improvement Act of 2008 (CPSIA).

Fire Classification

Passes California U.S. Title 19 (small scale), NFPA701-2015 TM#1 (small scale), NFPA 101 (Class A Rating), UBC (Class 1), BS 5867 2008 Part 2 Type B Performance, NFPA 701 TM #2 (large scale), and CAN/ULC-S 109-03 (large and small scale).

Environmental Certification

GREENGUARD gold certified. Acceptable for use in environments such as schools and healthcare facilities. Complies with requirements of the State of California's Department of Public Health "Standard Method for Testing and Evaluation of Volatile Organic Chemical Emissions from Indoor Sources Using Environmental Chambers, Version 1.1 (2010)" (also known as California Section 01350).

RoHS Compliant

Free of Lead (Pb), Cadmium (Cd), Mercury (Hg), Hexavalent chromium (Hex-Cr), Polybrominated biphenyls (PBB), and Polybrominated diphenyl ethers (PBDE).

Bacteria and Fungal Resistance

Passes ASTM E 2180, ASTM G21. Includes specially formulated antimicrobial.



DISTRIBUTED OR MANUFACTURED BY:

1-800-633-7550 | twitchellcorp.com

Twitchell Technical Products, LLC



SHADES BY MATISS

www.shadesbymatiss.com | T. 800 493 2040 | email: info@shadesbymatiss.com