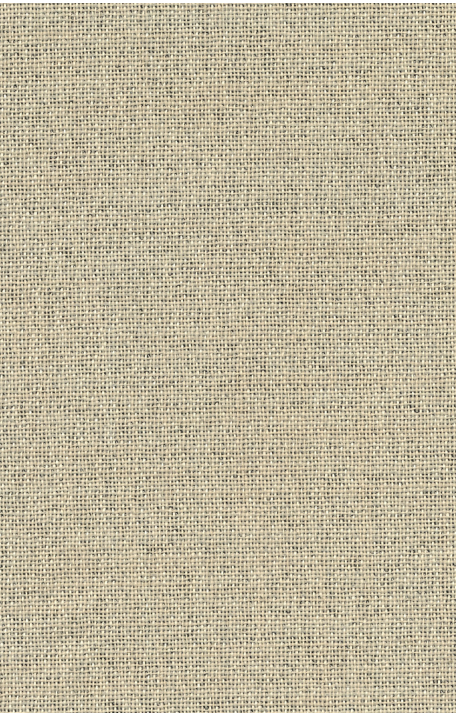




Luna DO is part of the finely curated Contract Creations concept which celebrates the diversity of woven textiles. The concept provides endless possibilities of combining exquisite textures with different expressions; from delicate, sheer mesh and coarse melanges to smooth velvet and dense dim-outs, for any room. The timeless textures, which all drape beautifully, are arranged into colour families making it easy to find the right shade and light filtering property for your project.





# LUNA / DIMOUT

## SPECIFICATION

**Material** 100% Polyester FR

**Light transmission** Dimout

**Repeat** -

**Width** 300 cm, 118 inch

**Weight** 285 g/m2, 8,4 oz/yd2

**Light fastness** SS-EN ISO 105-B02 (scale 1-8) 3-4

**Color fastness** to laundering SS-EN ISO 105-C06 (scale 1-5) 3-4

**Shrinkage** 2% (SS-EN ISO 6330+A1)

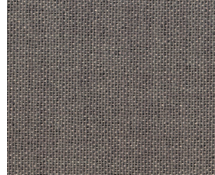
**Fire resistance** Classe 1, TEST UNI9177

**Certificates** SS-EN ISO 14001:2004

## Care & Cleaning Instructions:



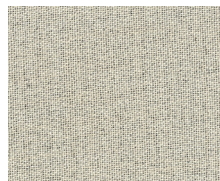
Sandcastle



Lands



Mud



Desert Sands

