

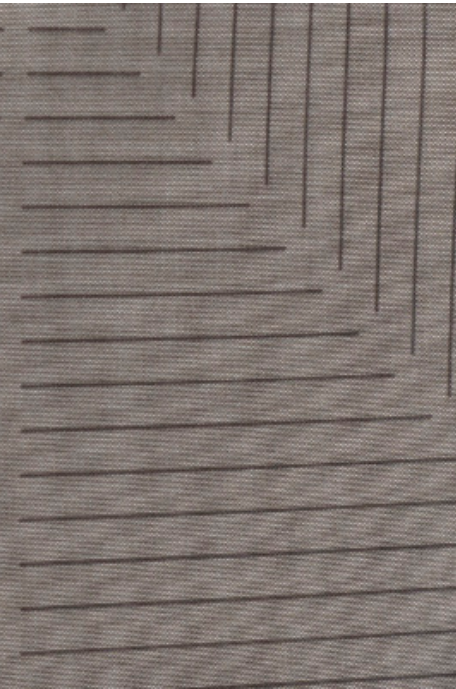


Drapery Textile / **THEORY**



Theory is a drapery textile part of the Lines of Illusion concept created by leading architects. Theory is inspired by traditional artisan techniques which are translated and distorted into a contemporary and modern design language. The pattern becomes multi-layered and can be interpreted differently depending on the choice of line- and textile-color.





THEORY / TRANSPARENT

SPECIFICATION

Material 100% Polyester Trevira CS
Light transmission Transparent
Repeat -63 cm, 24,8 inch
Width 315 cm, 124 inch
Weight 92 g/m2, 89 oz/yd2
Light fastness SS-EN ISO 105-B02 (scale 1-8) 6
Color fastness 4-5
Shrinkage 2% (SS-EN ISO 6330+A1)
Fire resistance NFP 92-507 M1, IMO Res A 47
Sound class E (ISO 354)
Certificates SS-EN ISO 14001:2004

Care & Cleaning Instructions:



Daisy



Silverpoint



Amazing

