

# ECLIPSE 3%

## SPECIFICATION

**Fire Retardant:** NFPA 701-10 TM#1, California U.S. Title 19 CAN/ULC-S109-03 Small & Large Flame Test

**Fabric Width:** 98" (250 cm), 122" (310 cm)

**Roll Length:** 30 yds

**Composition:** 36% fiberglass / 64% vinyl

**Openness Factor:** 3%

**Thickness:** 0.019" (0.49 mm) ± 5%

**Weight:** 11.50 oz / yd<sup>2</sup> (390 g / m<sup>2</sup>) ± 5%

**Cutting:** Ultrasonic, Crush, Cold

**Fabric Style:** Basketweave

**UV Blockage:** Approximately 97%

**Bacterial Resistance:** ASTM E2180, ASTM G21

**Acoustical Performance:** NRC: 0.15, SAA: 0.13

**Environmental Benefits:** RoHS - Lead Free



### Fabrication Methods:

Cutting: cold, ultrasonic or crush

Welding: radio frequency, high frequency, impulse, hot air, wedge.

May require the use of welding tape.

### Care & Cleaning Instructions:

Remove dust with vacuum cleaner or compressed air. Do not scrub.

Do not use solvents or any abrasive substance which might damage the coating of the fabric.

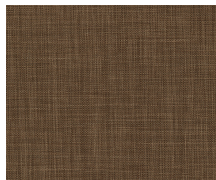
Clean with a sponge or a soft brush dipped in soapy water using mild detergent.

Rinse with clean water. Leave the blind down until completely dry.

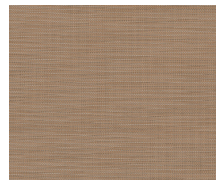
You can also very gently rub the fabric with a clean white pencil eraser to remove small stains.



Cottonwood



Driftwood



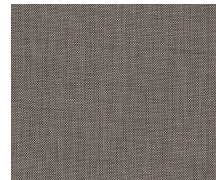
Dune



Feather



Moonlight



Terrain

