

Sustainable | 5% openness



Specifications

Item Number
Product Category
Fabric Style
Openness Factor
Composition
UV Blockage
Standard Packaging
Width
Weight
Thickness

011300
Sustainable
Mock Leno Weave
5%
100% Fiberglass
Approximately 95%
Rolls of 55 ly (50 lm)
94.5 in (240 cm)
5.10 oz/yd² (174 g/m²) ±5%
0.010 in (0.24 mm) ±5%

Classifications

Fire Classifications
Bacterial & Fungal Resistance
Environment
Acoustic

NFPA 701-10 TM# 1, California U.S. Title 19,
CAN/ULC-S109 Small & Large Scale
ASTM E2180, ASTM G21
RoHS - Lead Free, GREENGUARD Gold
NRC 0.10, SAA 0.11

Fabrication

Cutting: Rotary Knife or Crush | Welding: Radio-Frequency, High Frequency, Impulse, Hot Air or Wedge
May require the use of welding tape. Please contact Mermet for more information regarding our welding tape product line. We recommend testing all cutting and welding methods prior to use to confirm they meet your individual fabric specifications.



ITEM COLOR

000410 Sable
000440 Charcoal
000441 Dark Grey
000349 Light Grey
000348 Pearl
000319 Linen
00B119 White

Warranty

Care & Cleaning

Mermet Corporation
5970 N. Main Street ■ Cowpens, SC 29330
Ph 1.866.902.9647 ■ info@mermetusa.com

mermetusa.com

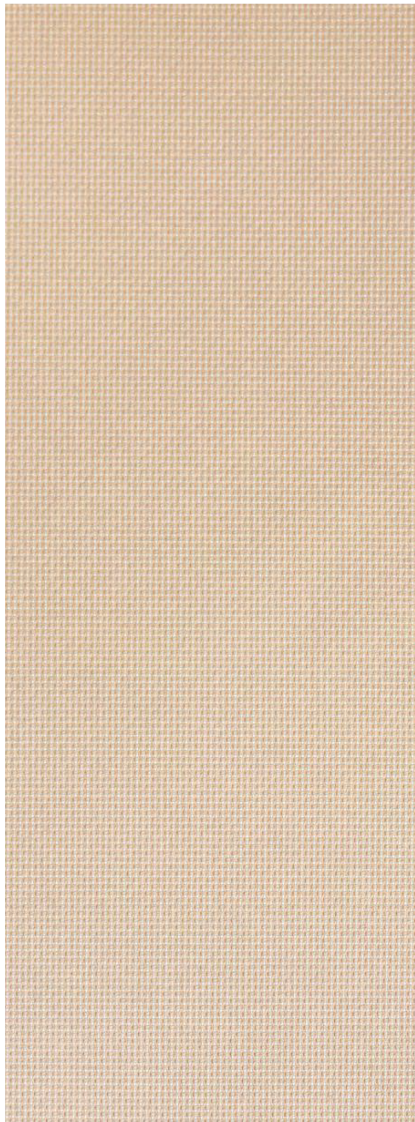
FABRIC					FABRIC + GLASS	
thermal			optical		commercial	residential
Rs %	As %	Ts %	Rv %	Tv %	SHGC % Improvement	SHGC
49	24	27	48	24	37	0.42
6	90	4	6	4	16	0.58
13	79	8	11	6	18	0.55
35	47	18	31	14	29	0.48
55	15	30	54	27	42	0.40
58	11	31	60	30	45	0.38
61	4	35	65	34	45	0.37

5 Year Interior

Regular light dusting with a feather duster is suggested. A hand-held vacuum with low suction may also be used. When vacuuming, avoid pulling or stretching the fabric. Rigorous vacuuming is not recommended since this could distort the fabric. Alternatively, dirt and debris can be blown away using compressed air or hand-held air dryer on the cool setting. Alternatively, a dry chemical sponge may also be used for spot cleaning.

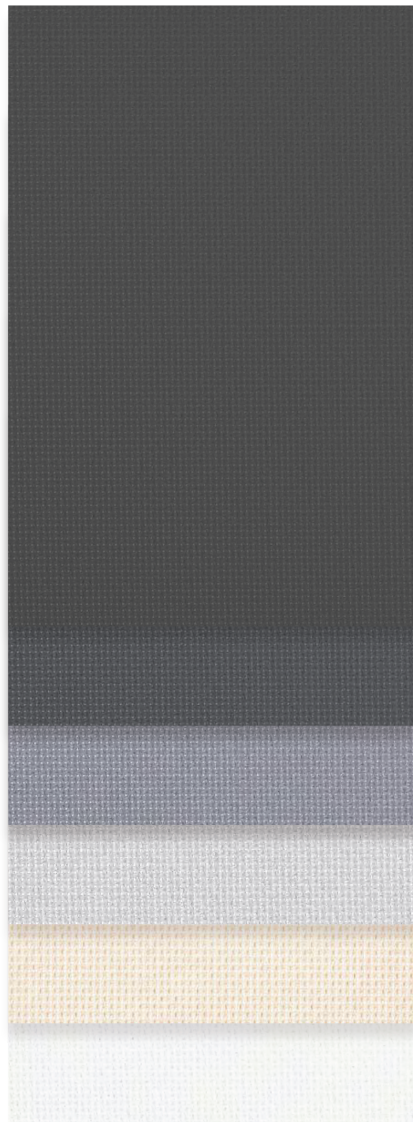
The fabric performance tests were conducted in accordance with ASTM E891 & ASTM E893-06: Total Solar Transmittance (Ts), Total Solar Reflectance (Rt), Total Solar Absorbance (As), Visible Reflectance (Rv), and Visible Transmittance (Tv). Glass performance tests for Solar Heat Gain Coefficient (SHGC) were conducted using the Lawrence Berkeley National Laboratory Window NFRC certified software. SHGC % improvement for commercial applications is based on a standard commercial glass makeup of Double Glazing 6mm / 16" air / 6mm with low E on surface #2. SHGC for residential applications is based on a default residential glass makeup of 3mm clear glass / 1/2" air / 3mm clear glass. Results for SHGC were obtained using the center of glass, and results are based on the fabric being placed on the interior of the glass. Acoustical performance was tested in accordance with ASTM C423-09a. NRC is Noise Reduction Coefficient. SAA is Sound Absorption Average. For up-to-date test results, performance specifications and larger samples, contact the Mermet Technical Department at www.mermetusa.com.





5%

000410 | Sable


000440
Charcoal

000441
Dark Grey

000349
Light Grey

000348
Pearl

000319
Linen

00B119
White

A Product of Our Environment

Woven from 100% fiberglass yarns, GreenScreen Nature recyclable shade fabrics are light on the planet yet high on performance. The natural fiberglass material used for GreenScreen Nature's construction provides industry leading achievement for flame resistance, smoke emissions, antimicrobial control, ease of cleaning, and dimensional stability. GreenScreen Nature is a smart, eco-friendly shade solution that not only increases the energy efficiency of buildings, but decreases overall resource demands of the planet.



Minimal ingredients.
Maximum performance.

- **100% Recyclable**
- **PVC-Free / Halogen-Free**
- **Lightweight, 100% fiberglass construction**
- **Inherently fire resistant**
- **Red List compliant with HPD available**

Printed on recycled paper.

