

OPERATIONS & MAINTENANCE GUIDE

CARING FOR YOUR FABRIC

Alkenz SunShadow - Remove dust with a vacuum cleaner or compressed air. Clean with a sponge and warm soapy water using mild detergent. Rinse with clean water. Do not scrub. Do not use solvents or abrasives that could harm the coating of the fabric. Leave the blind down until completely dry. You may also very gently rub the fabric with a clean white pencil eraser to remove small stains.

Almedahls Designer Fabrics - Do not soak. Clean by gently wiping with a sponge and warm soapy water. Remove dust with vacuum cleaner or compressed air. Do not scrub. Do not use solvents or abrasives. Leave the blind down until completely dry.

SierraSol Blackout Fabrics - Vacuum cleaning and/or gentle wiping with a damp sponge and gentle detergent. Do not soak, do not use any solvents, and do not rub. Leave the blind down until completely dry.

Verosol Metalized Fabrics - Dust can be removed with a soft feather duster or cloth or by vacuum with a soft brush at the lowest setting. When deeper cleaning is needed, the colored side can be cleaned with a damp cloth. Avoid harsh cleansers and abrasives.

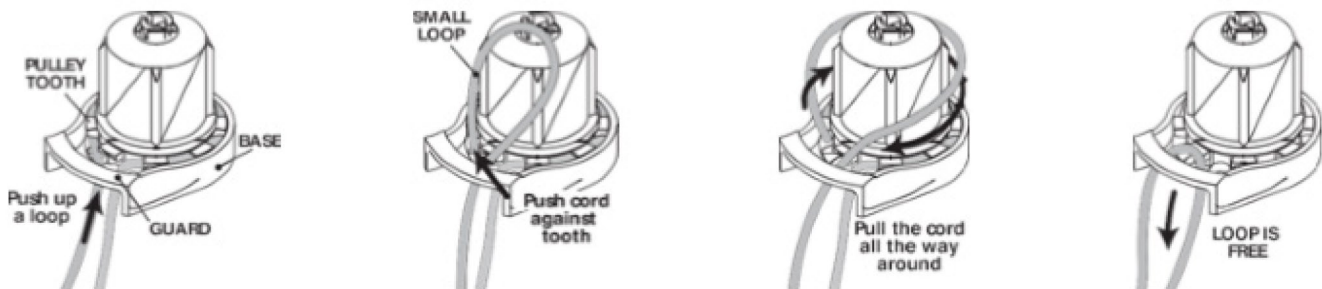
OPERATIONS AND MAINTENANCE FOR MANUAL SHADES

Rollease Acmeda Brackets and Chain Maintenance

Rollease Acmeda brackets require no maintenance other than the rare repair of a broken chain. If the chain breaks, it can be repaired by splicing with a chain connector or invisibly spliced by utilizing a pair of Rollease Acmeda Bead-Chain Pliers. If new chain is required, the length you require is twice the height of the unit less 2 inches. Rollease Acmeda Manual Clutch Drives are permanently lubricated and do not require maintenance.

IMPORTANT: Do not disassemble the clutch.

STEP 1 - Removing the old control chain:



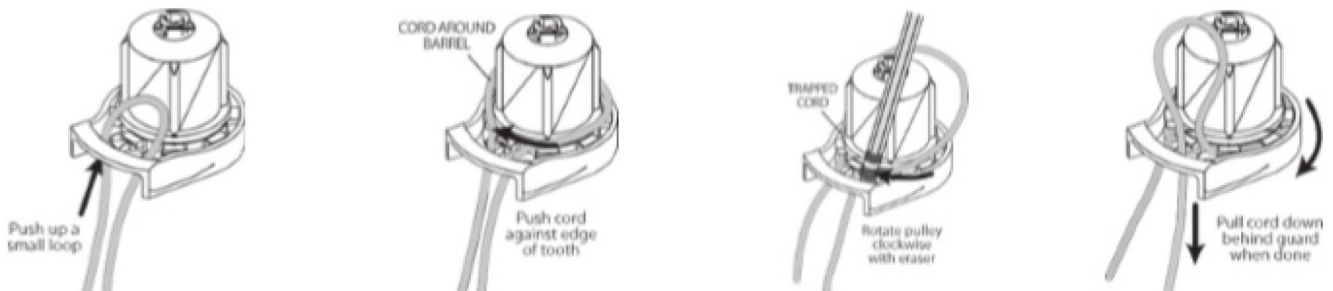
Hold the clutch by its base. With your other hand, push a small loop of cord up to the front from behind the guard.

With the hand that's not holding the base, bend the cord sharply against the first pulley tooth. Push or pull the cord hard enough to move the pulley. Use the cord as a handle to pull the pulley all the way around until the cord is completely out of the pulley.

STEP 2 - Select an appropriate chain length for the shade.

STEP 3 - Insert the new control chain:

Hold the clutch by its base, push up a small loop of the new chain through the chain guard and spin the gear to allow the chain to get threaded through.



STEP 4 - Installing a chain with a stop:

Align the tube and the housing with the chain stop at the top position.

STEP 5 - Positioning the catch

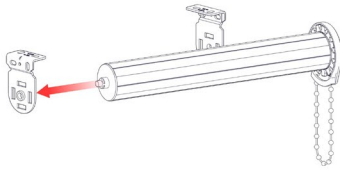
To position the catch on the clutch, pull extra slack on the side of the clutch that you want the catch on the clutch housing to move toward. Extra slack on the left will make the catch rotate counterclockwise. Placing extra slack on the right will make the catch move clockwise. Position the catch on the clutch so that it matches the tube when the shade is in its fully raised position and the stop is positioned at the bottom of the clutch on the side of the chain that is entering the clutch when you raise the shade.



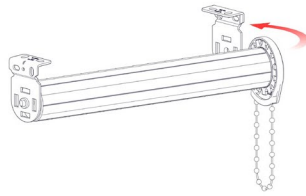
Installation

How to install a SL15 shade

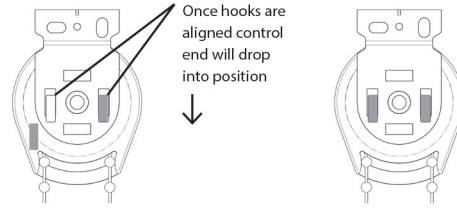
STEP 1 – Insert Pin End Into Bracket



STEP 2 – Compress pin end and swing clutch end into position

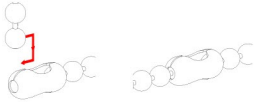


STEP 3 – Align clutch hooks onto bracket & ensure they are securely dropped into position

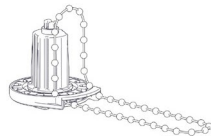


HOW TO INSTALL BEAD CHAIN ONTO CLUTCH

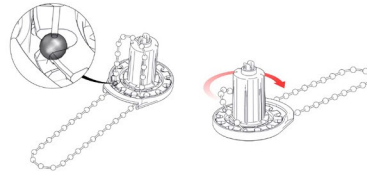
STEP 1 – cut and form a loop using bead chain provided



STEP 2 – insert the new chain through opening of chain guard



STEP 3 – place 1 ball into tooth and pull chain clockwise



STEP 4 – feed remaining loose chain back through chain guard to complete



OPERATIONS AND MAINTENANCE FOR MOTORIZED SHADES

Q I am having issues installing the shade unit into its brackets. What should I check?

Check for excessive friction in the assembly

Ensure that the tube deductions are correct

Ensure that there is a suitable clearance between the motor head & bracket

Ensure the idler pin is not pushing against the bracket, causing friction

ARC - AUTOMATE RADIO COMMUNICATION

Q How many motors can be controlled by one remote control?

Unlimited. An unlimited amount of motors can be set to the same channel as one single channel remote.

Q How does the Pulse hub communicate?

The hub has built in wi-fi to communicate with mobile devices and internet routers. It also utilizes ARC communication to send and receive messages from Automate motors.

ACCESSORIES

SOLAR PANEL

Q Will the solar panel keep the battery fully charged?

The solar panel will harvest enough energy to regenerate for 2 cycles per day, where a cycle is a full rotation of the blind; once up and down. This has been tested in the worst-case conditions with the panel being south facing, in indirect light and behind glass. When the panel is north facing in direct sunlight, the results will be even better.

Q Is the customer required to remove the motor from the blind to charge it?

No, the motor is charged while installed.

Q My motor is attached to the solar panel, but the battery goes flat.

There is Insufficient charging from the solar panel. Ensure that the solar panel is receiving adequate sunlight – check connection and orientation of the solar panel.

INTERNAL SUN SENSOR

Q How many motors can the interior sun sensor handle?

As long as the motors have not exceeded the amount of control devices they can memorize (typically 30) and all motors are within range of the sensor (typically 30m) or up to 200m open space.

The interior sun sensor can handle unlimited motors.

Q Can the interior sun sensor control both internal and external motors?

Yes.

LI-ION BATTERY MOTORS

Q Is the customer required to remove the motor from the blind to charge it?

No, the motor can be charged while installed. Simply plug in the charger to the connector at the motor head.

Q How long does the motor take to charge?

First charge: 6 hours. Subsequent charges should also last 6 hours.

Q What do the red/green lights on the charger mean?

A red light comes on to signify fast charging of the battery. After fast charge is done, the light turns green and the remaining 3-hour charge becomes a trickle charge, optimizing battery performance.

Q Can I overcharge the battery by leaving the charger on too long?

No. The motor/battery both have integrated overcharge protection circuits. This means that the battery will limit the charge it will accept if plugged in longer than necessary.

Q Can I leave the charger on the motor indefinitely?

Yes. The charger can be left plugged into the motor longer than a charging cycle requires. This makes the motor into a hard-wired solution, with a battery backup.

Q How long will the battery last before it needs to be re-charged?

It depends on the motor model and the size/weight of the shade. Generally, the target is 500 up/down cycles.

The Automate Pulse app will indicate when the motor battery is low and in need of recharge.

Q Why does my motor beep 10 times when in use?

The battery in the motor is in need of recharging.

- Recharge with the AC adaptor that came with the blind.
- Check the connection and positioning of the solar panel

Q Does the motor battery ever need replacing?

No, the battery is designed for the full life of the motor.



SHADES BY MATISS
custom shading solutions

PROGRAMMING

Q Why am I unable to pair the remote to the motor?

The pairing is a sequence that has a time limit. When you press and hold the P1 button until the motor jogs one time, you must then press and hold the STOP button on the desired transmitter/channel within 4 seconds, and the motor will jog twice and beep to confirm that it is paired.

Q How do I set limits?

When programming a motor for the first time, after it is paired to a channel, you should first check direction. To change direction press UP and DOWN simultaneously. Then set limits. Adjust your top limit position, then press and hold UP and STOP until the motor jogs and beeps. Then move the shade to the bottom position and adjust its position to where you want it to be. Press DOWN and STOP and the motor will jog and beep, to confirm the limit. Then, the motor is programmed and will run as normal.

Q My limit position needs to be adjusted. How do I do that?

Move the shade to somewhere near where you want the limit to be. For the top limit, press and hold UP and STOP until the motor jogs, and release. The motor will be in step mode and you can adjust the position as you prefer. Then press and hold UP and STOP and the motor will jog and beep to signal that it has recorded that limit. Follow the similar procedure to adjust the bottom limit. Press DOWN and STOP. Please note that it takes longer to open the limit, then it does to close it. This is intentional.

Q Why am I unable to set the limits. The motor will jog and pair, but I can't set the limits?

Most likely, you have a locking remote control. When it is locked, you cannot access multi button functions. The locking remote is used to prevent unintended changing of motor limits. Inside the battery compartment, there is a button that is painted black. Pressing that button while looking at the display, will show the transmitter's current state. L for locked and U for unlocked. It is recommended that the remote be locked, after all motors have been programmed and set. This will prevent any inadvertent changing of the limits.

Q I cannot set limits on a single motor [multiple motors respond].

Reason: Multiple motors are paired to the same channel

- Always reserve an individual channel for programming functions
- SYSTEM BEST PRACTISE - Provide an extra 15 channel remote in your multi motor projects for the installer. That provides individual control dedicate to each motor for programming purposes.
- Place all other motors into sleep mode [ref to P1]

Q Why does a motor "LOSE" its limits?

- The battery is dead
- Someone accidentally reset the motor to factory settings

Q How can I change directions? My motor is programmed with its limits, but when I push the UP button, it goes down.

Before the limits are set, motor direction can be changed by pressing and holding the UP and DOWN buttons simultaneously, until the motor reacts. If the limits have been set, the direction can be changed by pressing and holding the P1 button until the motor jogs 3 times.

Q Can you hide channels that are not in use?

Yes, on a multi-channel remote, they can be adjusted to show the number of channels in use; e.g. if there are 8 motors on the job you can select it to be an 8-channel remote.

Q What is channel 0 for?

All motors that are programmed to the same remote, automatically respond to channel 0. For example, on channel 0, pressing the up button will move all blinds that are programmed to that remote up.

Q Why can't I program another channel to my motor? I was able to pair the motor to the first transmitter, but I can't get it to pair to the next channel.

Before a motor can accept programming from another channel or transmitter, the limits must be set so that the motor is in normal operational mode.

PROGRAMMING INSTRUCTIONS

Please refer to our website at <http://www.rolleaseacmeda.com>
Make sure that you are logged-in when following this link.

FURTHER SUPPORT

If you are an end-user, please contact your installer or dealer.

If you are a dealer or distributor, please contact us for further assistance.
Contact information is located at the bottom of our website
<http://www.rolleaseacmeda.com>

TROUBLE SHOOTING

Problem	Cause	Remedy
Motor is not responding	Battery in motor is depleted	Recharge with compatible AC adaptor and check connection and positioning of PV panel.
	Insufficient charging from Solar (PV) Panel	Check connection and orientation of PV panel.
	Transmitter battery is discharged	Replace battery
	Battery is inserted incorrectly into transmitter	Check battery polarity
	Radio interference/shielding	Ensure transmitter is positioned away from metal objects and the aerial on motor or receiver is kept straight and away from metal
	Receiver distance is too far from transmitter	Move transmitter to a closer position
	Power failure	Check power supply to motor is connected and active
Motor beeps 10 times when in use	Incorrect wiring	Check that wiring is connected correctly (refer to motor installation instructions)
	Battery voltage is low / PV (solar) panel issue	Recharge with AC adaptor or check connection and positioning of PV pane
Cannot program a single Motor (multiple motors respond)	Multiple motors are paired to the same channel.	Always reserve an individual channel for programming functions
		SYSTEM BEST PRACTICE - Provide an extra 15 channel remote in your multi motor projects, that provides individual control for each motor for programming purposes
		Place all other motors into sleep mode (ref to P1 function overview - section 3)



SHADES BY MATISS
custom shading solutions