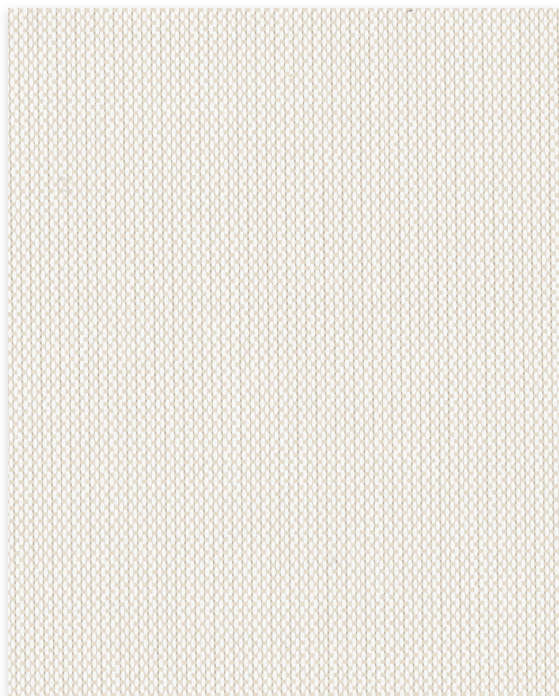


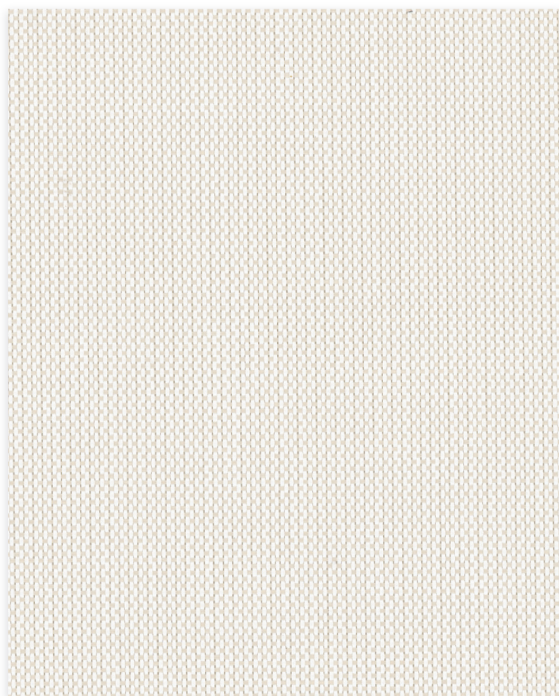
Vienne

Conventional | 5% 10% openness



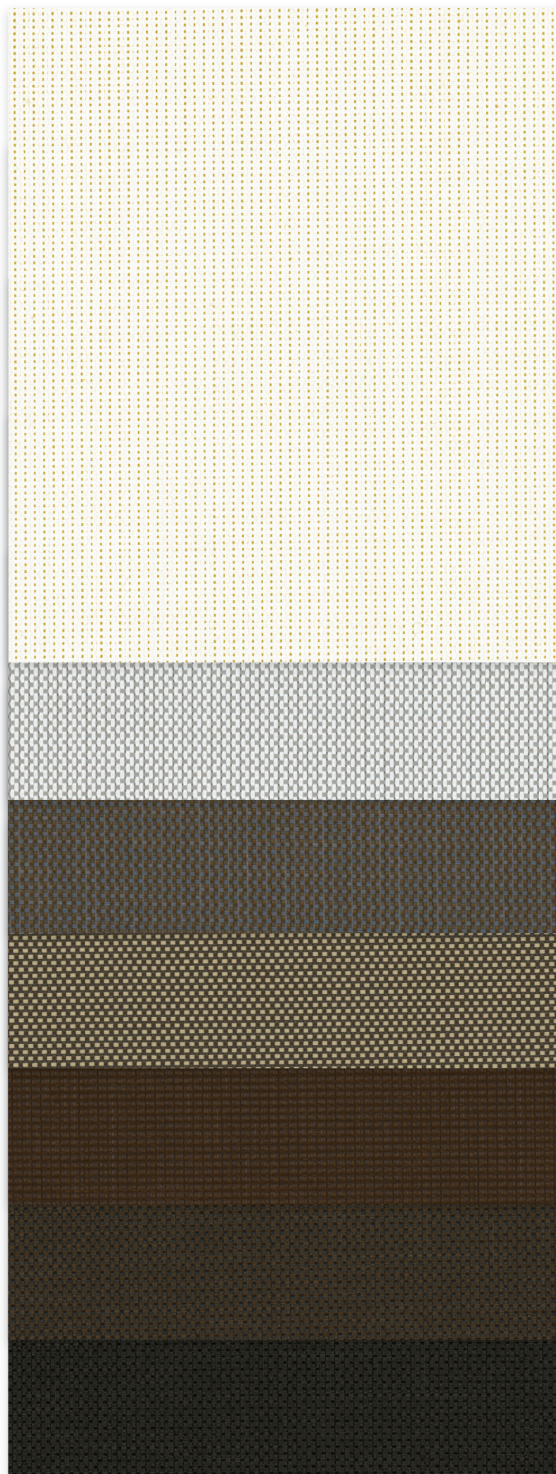
5%

902920 | White/Linen



10%

902920 | White/Linen



902902
White/White

902907
White/Pearl

961901
Cocoa/Grey

961923
Cocoa/Straw

961961
Cocoa/Cocoa

930961
Charcoal/Cocoa

930930
Charcoal/Charcoal

Fabrics sampled on waterfall are 5% openness.

MERMET
Sun Control Textiles™



www.shadesbymatiss.com | T. 800 493 2040 | email: info@shadesbymatiss.com

Specifications

Item Number
Product Category
Fabric Style
Openness Factor
Composition
UV Blockage
Standard Packaging
Width
Weight
Thickness

5% 001805 | 10% 001810
Conventional
Plain Weave
5% & 10%
42% Fiberglass | 58% Vinyl
Approximately 90% - 95%
Rolls of 30 ly (27 lm)
98 in (250 cm) | 122 in (310 cm) available in select colors - Charcoal/Charcoal (930930) & Charcoal/Cocoa (930961)
5% 11.83 oz/yd² (401 g/m²)±5% | 10% 10.91 oz/yd² (370 g/m²)±5%
5% 0.018 in (0.46 mm)±5% | 10% 0.019 in (0.47 mm)±5%

Classifications

Fire Classifications

Bacterial & Fungal Resistance
Environment
Acoustical Performance

NFPA 701-10 TM#1, California U.S. Title 19,
CAN/ULC-S109-03 Small & Large Flame Test
ASTM E2180, ASTM G21
RoHS - Lead Free, GREENGUARD Gold
5% NRC: 0.10, SAA: 0.13 | 10% NRC: 0.05, SAA: 0.07

Fabrication

Cutting: Cold, Ultrasonic or Crush | Welding: Radio Frequency, High Frequency, Impulse, Hot Air or Wedge
We recommend testing all cutting and welding methods prior to use to confirm they meet your individual fabric specifications.

Vienne

ITEM	COLOR
902920	White/Linen
902902	White/White
902907	White/Pearl
961901	Cocoa/Grey
961923	Cocoa/Straw
961961	Cocoa/Cocoa
930961	Charcoal/Cocoa
930930	Charcoal/Charcoal

FABRIC										FABRIC + GLASS							
thermal Total Solar						optical				commercial SHGC % Improvement				residential SHGC			
Rs (%)	As (%)	Ts (%)				Rv (%)	Tv (%)			Interior	Exterior			Interior	Exterior		
5	10	5	10	5	10	5	10	5	10	5	10	5	10	5	10	5	10
65	63	17	15	18	22	69	67	15	20	50	47	79	74	0.33	0.36	0.16	0.19
73	69	8	8	19	23	78	74	17	21	55	53	76	74	0.29	0.32	0.16	0.19
55	54	33	26	12	20	59	57	10	18	42	39	84	76	0.38	0.41	0.12	0.17
12	11	82	78	6	11	12	11	6	11	16	13	84	82	0.61	0.64	0.11	0.13
21	19	73	71	6	10	23	20	6	9	21	18	84	84	0.56	0.59	0.10	0.12
8	7	86	82	6	11	8	7	6	11	13	11	84	82	0.63	0.66	0.11	0.13
6	5	87	80	7	15	6	5	7	15	16	11	79	82	0.58	0.67	0.14	0.16
5	4	89	84	6	12	5	4	7	12	13	8	82	79	0.64	0.67	0.11	0.14

Warranty

10 Year

Care & Cleaning

Remove dust with vacuum cleaner or compressed air. Do not scrub. Do not use solvents or any abrasive substance which might damage the coating of the fabric. Clean with a sponge or a soft brush dipped in soapy water using mild detergent. Rinse with clean water. Leave the blind down until completely dry. You can also very gently rub the fabric with a clean white pencil eraser to remove small stains.

The fabric performance tests were conducted in accordance with ASTM E801 & ASTM E903-96: Total Solar Transmittance (Ts), Total Solar Reflectance (Rs), Total Solar Absorptance (As), Visible Reflectance (Rv), and Visible Transmission (Tv). Glass performance tests for Solar Heat Gain Coefficient (SHGC) were conducted using the Lawrence Berkeley National Laboratory Window 7.3 NFRC certified software. SHGC % improvement for commercial applications is based on a standard commercial glass makeup of Double Glazing 6 mm / 1/2" air / 6 mm with low E on surface #2. SHGC for residential applications is based on a default residential glass makeup of 3mm clear glass / 1/2" air / 3mm clear glass. Results for SHGC were obtained using the center of glass. For up-to-date test results, performance specifications and larger samples, contact the Mermet Technical Department at: www.mermetusa.com.

Mermet Corporation
5970 N. Main Street ■ Cowpens, SC 29330
Ph 1.866.902.9647 ■ info@mermetusa.com

mermetusa.com

