

## Rollease Acmeda VEUE Suite



VEUE STRAIGHT DROP



VEUE WIRE GUIDE



VEUE CHANNEL GUIDE

Rollease Acmeda offers a comprehensive outdoor shading suite with Veue Drop Awnings. The Veue suite comprises Wire Guide, Channel Guide, Straight Drop and Pivot Arm systems. Veue is also cross-compatible with the popular Zipscreen.

### AESTHETIC FEATURES

- Maintains consistent aesthetic across 4 solutions to suit a variety of applications.
- Wide range of standard colors and ability to custom powder-coat extrusions to suit any external environment.
- Choice of open or enclosed roller.
- Sleek and contemporary square cassette box.
- Clean, architectural look.

### ASSEMBLY / INSTALLATION BENEFITS

- One piece weight bar in standard and heavy weights for easier assembly.
- Two piece cassette box for easy installation.
- Choice of 63 & 78 aluminum and steel tubes.
- One reducer, a combined booster and pre tension idler means less inventory.
- End plates overlap the edges of the front and back covers to hide cutting imperfections.
- Hinges are located on the end plates for easy headbox installation.
- Veue Drop Awnings are modular. Utilize common components across the entire suite, including Zipscreen.

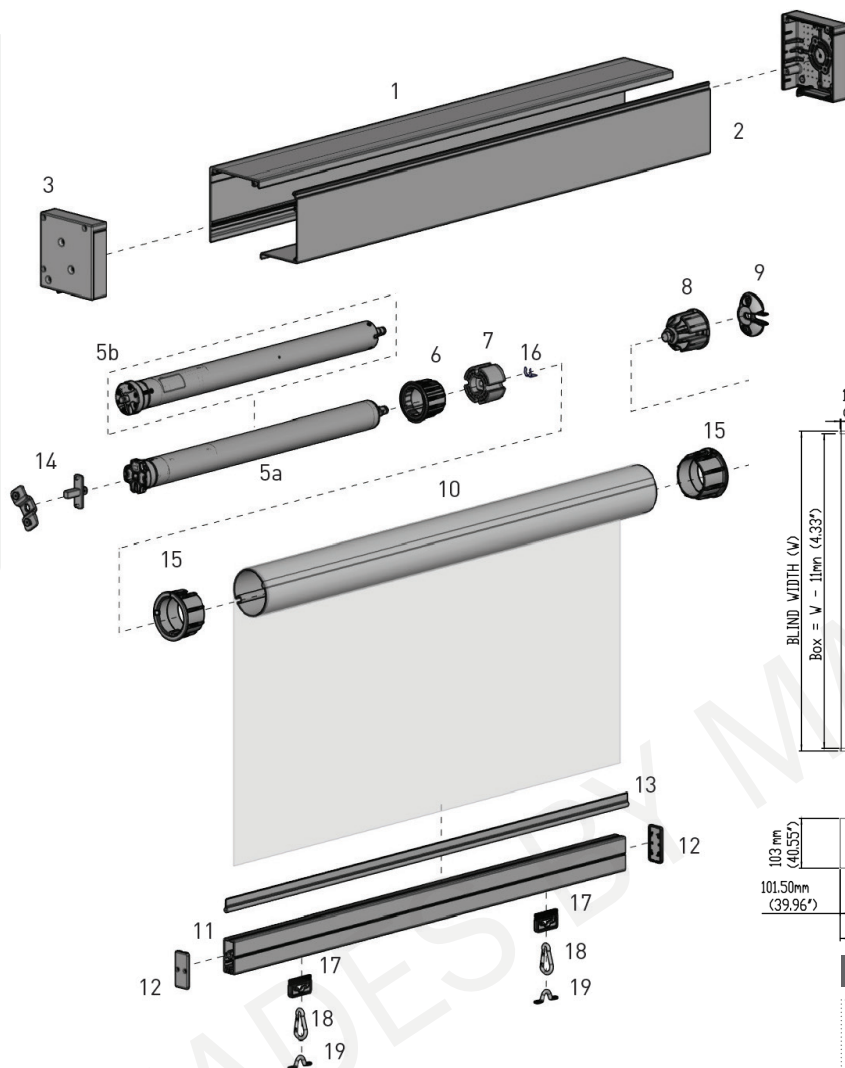
### FUNCTIONAL BENEFITS

- A semi-fascia is now available, in addition to a fully-enclosed box or open bracket solution offering multiple headbox configurations.
- Exterior grade powder coated finish.
- The stronger F56 weight bar offers more rigidity over wider spans.
- Choice of weight bar bubble or weather seal strip to close gap on uneven floors.
- An all-inclusive end plate set means that cover caps are no longer required. The universal end plate set comes with a pre-notched section that can be 'snapped-off' to accommodate all control options.

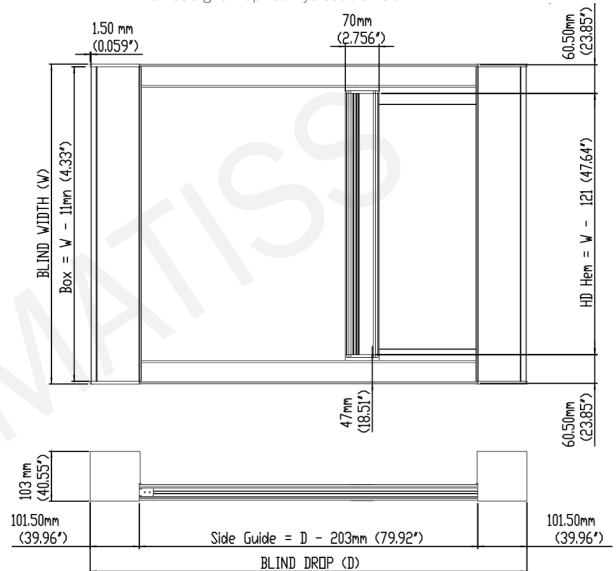


VEUE PIVOT ARM

# Rollease Acmeda VEUE Suite



1. Box 120 Back
2. Box 120 Cover
3. Box 120 End Plate Set
4. M50 Motor Bracket + Screws - Universal Motors
5. Automate FT Electronic Limit Motor
6. Automate Crown Wheel/Somfy
7. Automate Drive Wheel 78mm
8. Bearing Idler
9. Idler/Spring Adaptor
10. Tube
11. F56 Weight Bar
12. F56 Weight Bar End Cap Set
13. 7.2mm Spline w/15mm Tail
14. Automate | 10mm Square Shaft + Screws | SLIM Motor
15. Tube Adaptor | 78mm
16. Automate | Drive Wheel CLIP for FT Motor
17. 25mm Straight Drop Loop
18. Straight Drop Spring Clip - 50mm
19. Straight Drop Pad Eye Saddle - 30mm



## CONTROL OPTIONS

### MOTORIZED



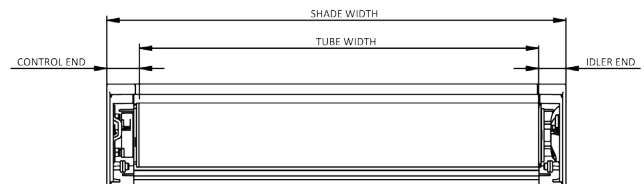
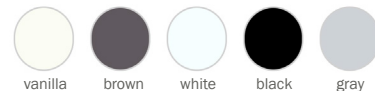
### CRANK GEAR



### SPRING



## Hardware Colors



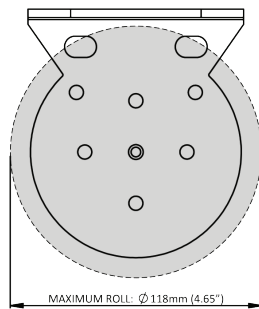
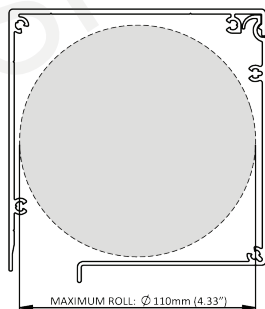
## OVERALL DEDUCTION

BOX	66mm [2.6"]
OPEN	80mm [3.15"]*

\*For Face Fix Installations without covers take 18mm [0.71"] off.

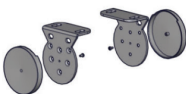
## SPECIFICATIONS

### MAX ROLL

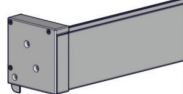


## SYSTEM OPTIONS

### OPEN BRACKETS



### FASCIA

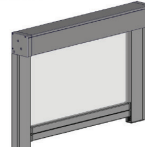


## SYSTEM UPGRADES

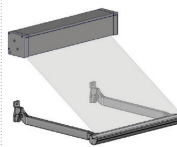
### WIRE GUIDE\*



### CHANNEL\*

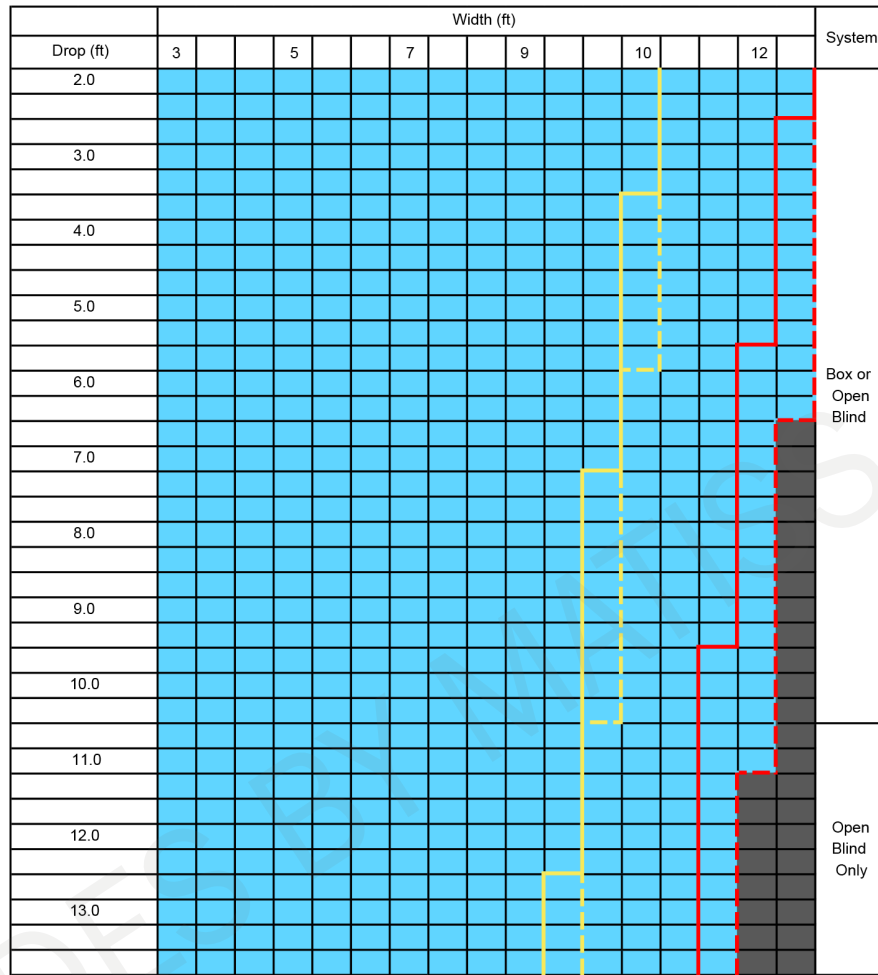


### PIVOT ARM\*



# Rollease Acmeda VEUE Suite

## VEUE Suite All Systems Capacity Chart



**Parameters:** F56 HD External Weight Bar, with Ballast, 24.17 oz/yd<sup>2</sup>

LEGEND	DESCRIPTION
	Gear Ratio 5:1/Motor
	63mm Aluminum Tube Optimum Performance
	63mm Steel Tube Optimum Performance*
	78mm Aluminum Tube Optimum Performance
	78mm Steel Tube Optimum Performance
	Cannot be achieved - outside product specifications

\*Motor not compatible with 63mm Steel Tube

