

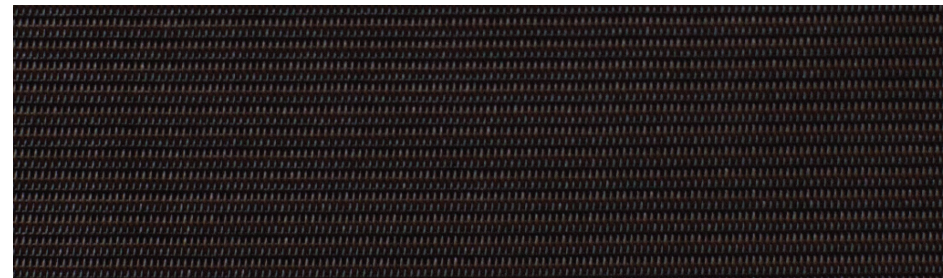
# SHADEVIEW10D

BRAND FABRIC

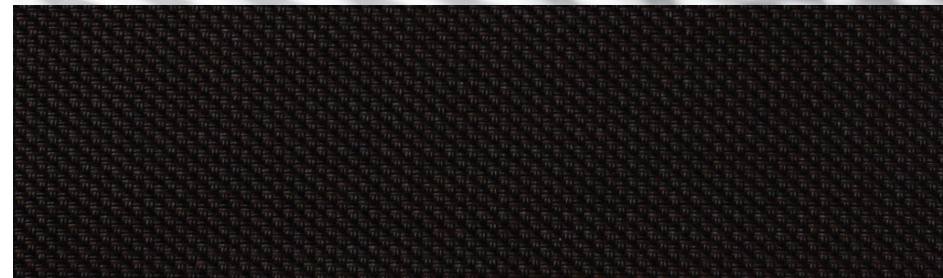
# SHADEVIEW18D

BRAND FABRIC

**#1** ARCHITECTURALLY  
SPECIFIED FABRIC  
IN THE WORLD



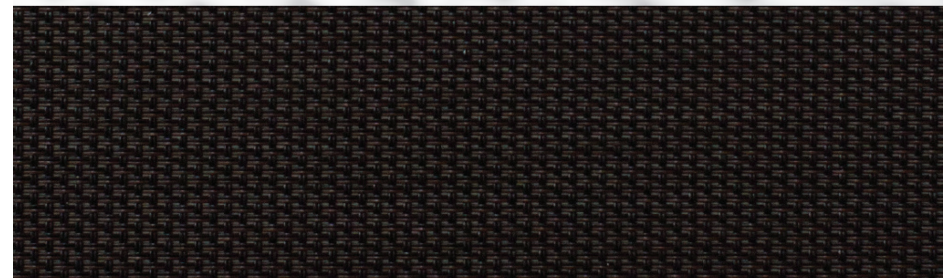
18D - 1%



18D - 3%



18D - 5%



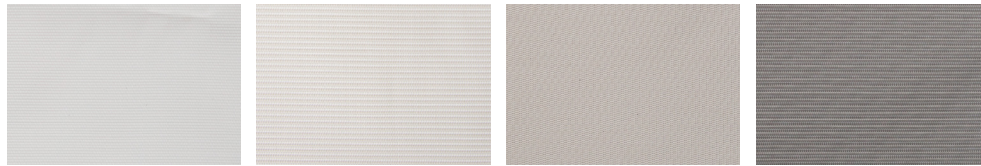
18D - 10%



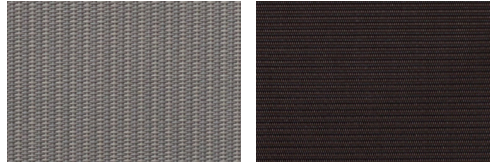
**SHADES BY MATISS**

[www.shadesbymatiss.com](http://www.shadesbymatiss.com) | T. 800 493 2040 | email: [info@shadesbymatiss.com](mailto:info@shadesbymatiss.com)

**1% OPENNESS\*/ 2% Openness\*** (Not available in Dawn Dusk)



White White Alabaster Medium Tan Dawn Dusk White

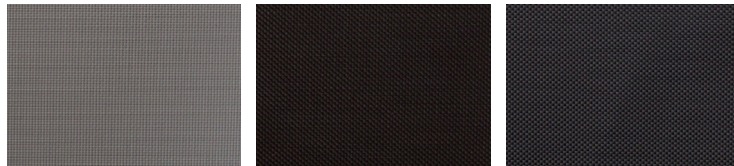


Dawn Dusk (Not available in 2%) Black Brown

**3% OPENNESS\***

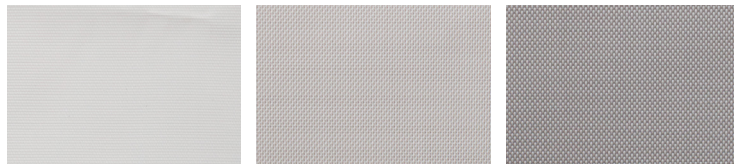


White WhiteTan Medium Tan White Dawn

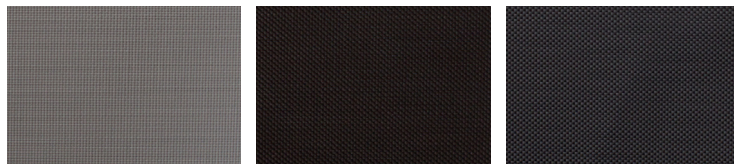


Dawn Dusk Black Brown Graphite Charcoal

**5% OPENNESS\*/10% Openness\***



White WhiteTan White Dawn



Dawn Dusk Black Brown Graphite Charcoal

\* Special order item/Minimum quantity may be required

## Specifications

**Product Description:** Shadeview 18D is a vinyl coated polyester fabric. This beautifully woven fabric is durable yet lightweight in nature for any interior application including roller shades, fixed screens, and panel tracks. These fabrics help improve energy efficiency, mood from natural sunlight, improve visibility during the day, and reduce risks of adverse effects caused by solar heat and light.

STYLE	18D 1%	18D 2%	18D 3%	18D 5%	18D 10%
<b>Openness Factor</b>	1%	2%	3%	5%	10%
<b>UV Blockage</b>	99%	98%	97%	95%	90%
<b>Weight, oz/yd<sup>2</sup></b>	19.1	16.9	19.5	17.0	16.1
<b>Thickness, inches</b>	0.0371	0.0398	0.0359	0.0337	0.0389
<b>Weatherability</b>	G154: Trace Discoloration				
<b>Mildew Resistance</b>	G21 - 13: No Growth				
<b>Fabric Composition</b>	PVC: 75%, Polyester: 25%				
<b>Suggested Fabrication Methods</b>	Crush Cut, Laser, Cold Knife, RF Weld, Railroading				
<b>Ideal Uses</b>	Roman Shades, Roller Shades, Sheers, Screens				
<b>Roll Length</b>	Approx. 30 linear yds				
<b>Warranty</b>	10 Year Interior				
<b>Environmental Certification</b>	Greenguard Gold				

**18D 1%, 2% Fabric Width 96"**  
**18D 3% , 5%, 10% Fabric Width 96", 126"**

### REACH Compliant

Regulated by Registration, Evaluation, Authorization and Restriction of Chemicals. REACH places greater responsibility on industry to manage the risks that chemicals may pose to human health and the environment.

### Children's Toy Act

Does not contain harmful phthalates listed under Section 108 of the Consumer Product Safety Improvement Act of 2008 (CPSIA).

### Fire Classification

Passes California U.S. Title 19 (small scale), NFPA701-2015 TM#1 (small scale), NFPA 101 (Class A Rating), UBC (Class 1), BS 5867 2008 Part 2 Type B Performance, NFPA 701 TM #2 (large scale), and CAN/ULC-S 109-03 (large and small scale).

### Environmental Certification

GREENGUARD gold certified. Acceptable for use in environments such as schools and healthcare facilities. Complies with requirements of the State of California's Department of Public Health "Standard Method for Testing and Evaluation of Volatile Organic Chemical Emissions from Indoor Sources Using Environmental Chambers, Version 1.1 (2010)" (also known as California Section 01350).

### RoHS Compliant

Free of Lead (Pb), Cadmium (Cd), Mercury (Hg), Hexavalent chromium (Hex-Cr), Polybrominated biphenyls (PBB), and Polybrominated diphenyl ethers (PBDE).

### Bacteria and Fungal Resistance

Passes ASTM E 2180, ASTM G21. Includes specially formulated antimicrobial.



DISTRIBUTED OR MANUFACTURED BY:



**SHADES BY MATISS**

www.shadesbymatiss.com | T. 800 493 2040 | email: info@shadesbymatiss.com