

AERO - DUAL ROLLER SYSTEM S45

Our innovative AERO dual roller system, offers a premium aesthetically pleasing and technologically advanced solution. Controlling two blinds with either a single chain or independent spring mechanism, raising and lowering shades to your preferred top and bottom locations, in a smooth and controlled motion, with one simple touch.

AESTHETICAL FEATURES

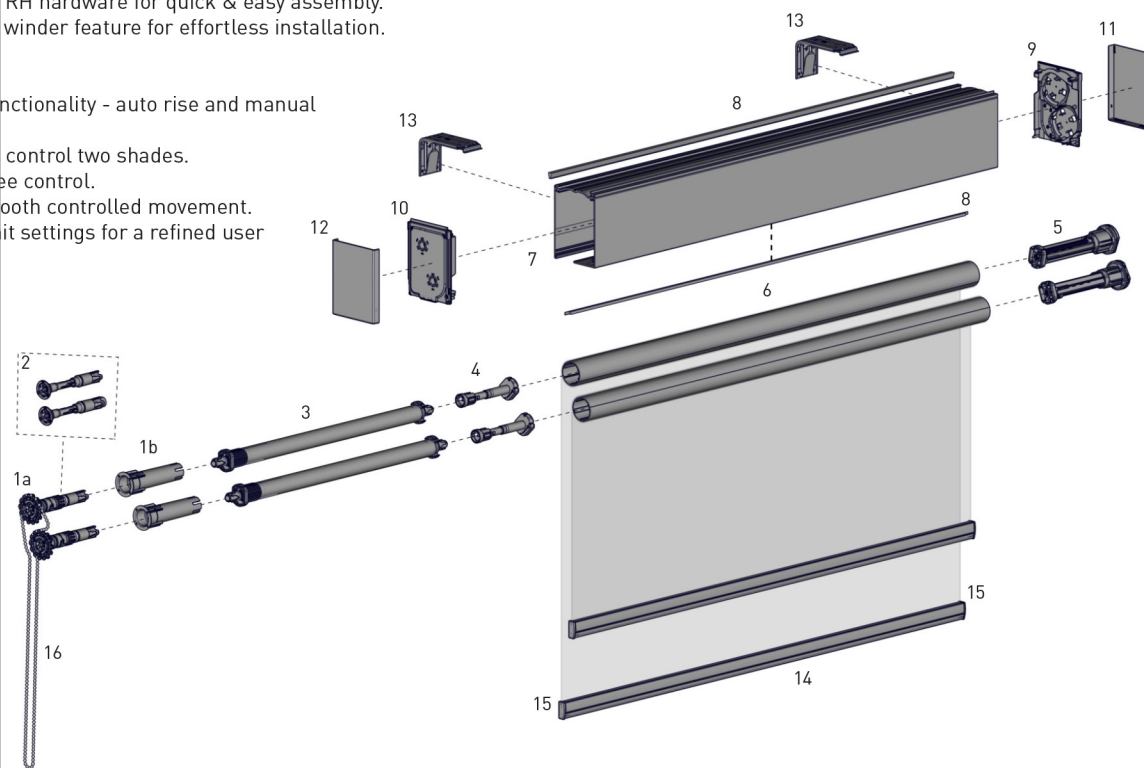
- Contemporary compact headbox completed with covers for a seamless finish.
- Slimline mounting clips resulting in minimal light gaps.

PRODUCTION / ASSEMBLY FEATURES

- Easy pre-tensioning through control bracket.
- Revolutionary top and bottom limit setting function, with easy push button control.
- Colour coded LH & RH hardware for quick & easy assembly.
- Self-locating chain winder feature for effortless installation.

FUNCTIONAL BENEFITS

- Semi-Automatic functionality - auto rise and manual lowering
- One single chain to control two shades.
- Alternative chainfree control.
- Decelerator for smooth controlled movement.
- Top and bottom limit settings for a refined user experience.
- Patent protected



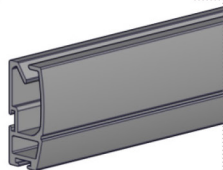
*LH Control Shown

SYSTEM INDEX

1a	AERO Dual Pretension Chain Control
	RB12-3002-xxx140 - Chain Control LH
	RB12-3002-xxx240 - Chain Control RH
1b	AERO Connector - Chain Winder/Booster
	RB12-4510-xxx045
2	AERO Dual Pretension Chainfree Control
	RB12-5001-xxx040 - Chainfree Control
3	Booster Uni.
	RB12-450#-xxx045 - Short (0), Light (1), Standard (2) & HD (3)
4	Booster Decelerator
	RB12-710#-xxx#45 - LH (1) & RH (2)
5	AERO Limiter Idle End
	RB12-600#-xxx#45 - LH (1) & RH (2)
6	S45 Aluminum Tube
	RB93-044#-000580 - LIGHT, STD or HD
7	AERO Dual Cassette (Back, Cover & Top)
	RB12-0103-xxxLLL - Top
	RB12-020#-xxxLLL - Cover (1), Back (2)
8	Fabric Brush - T-Slot
	SB91-0011-xxx###
	SB91-0012-xxx###
9	AERO Dual Cassette Idler Bracket
	RB12-1002-xxx#40 - LH (1) RH (2)
10	AERO Dual Cassette Chain Control Bracket
	RB12-1001-xxx#40 - Chain LH (1) RH (2)
	RB12-1003-xxx#40 - Chainfree LH (1) RH (2)
11	AERO Dual Cassette Chainfree/Idler Control Cap
	RB12-1202-xxx040
12	AERO Dual Cassette Chain Control Cap
	RB12-1201-xxx040
13	AERO Dual Cassette Mounting Clip
	RB12-2001-xxx000
14	D30 SILENT Medium Alum. Bottom Rail
	RB91-1232-xxx580
15	D30 Medium Bottom Rail End Caps
	RB91-2131-xxx002
16	Chains & Accessories
	xxx - Colour

SYSTEM OPTIONS - COMPATIBLE BOTTOM RAILS

D30 Silent Rail



Architectural Hembar



COLOUR RANGE



pure white
069

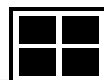
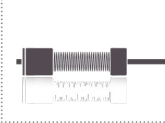
silver grey
338

CONTROL OPTIONS

CHAIN CONTROL



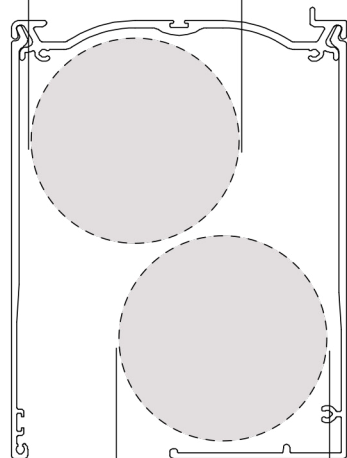
CHAINFREE



SPECIFICATIONS

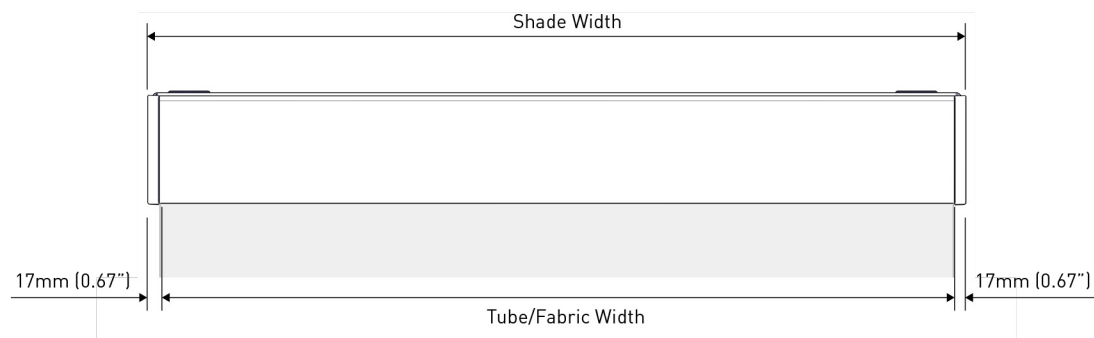
MAX ROLL

MAX ROLL: 62mm [2.441"]



MAX ROLL: 62mm [2.441"]

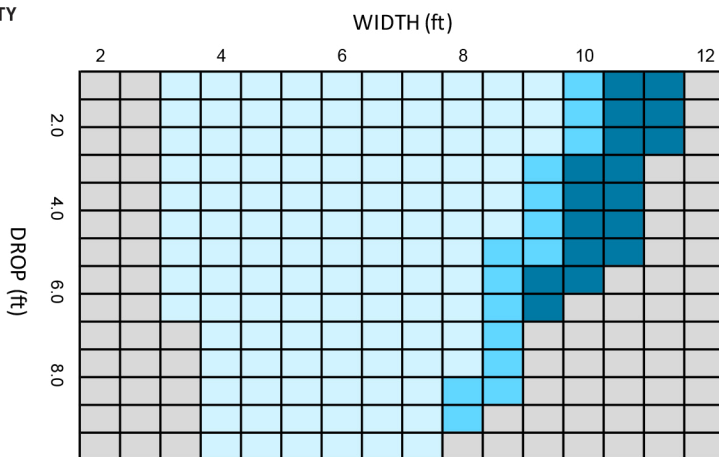
DEDUCTION



TUBE/FABRIC WIDTH

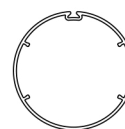
SHADE WIDTH - 34mm [1.34"]

SYSTEM CAPACITY



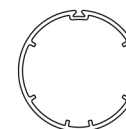
LEGEND	DESCRIPTION
Light Blue	S45 LIGHT STANDARD HEAVY DUTY
Medium Blue	S45 STANDARD HEAVY DUTY
Dark Blue	S45 HEAVY DUTY
Grey	OUTSIDE SPECIFICATION

TUBE SPECS



S45 LIGHT T-Spline Tube

Code: RB93-0443-000580
 RB93-6443-000580 (with D/S tape)
 OD: 43mm [1.69"]
 Length: 5.8m [19.029ft]



S45 STANDARD T-Spline Tube

Code: RB93-0444-000580
 RB93-6444-000580 (with D/S tape)
 OD: 44mm [1.73"]
 Length: 5.8m [19.029ft]



S45 HEAVY DUTY T-Spline Tube

Code: RB93-0449-000580
 RB93-6449-000580 (with D/S tape)
 OD: 49mm [1.92"]
 Length: 5.8m [19.029ft]

