

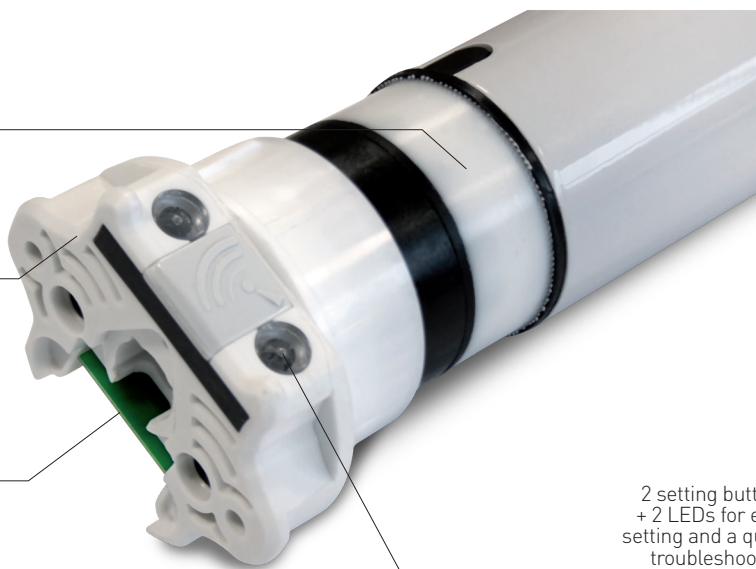


DC motor,  
External power supply

Built-in radio  
receiver

- 6 pins connector:  
2 for power  
4 for control (dry contacts)
- Integrated antenna

2 setting buttons  
+ 2 LEDs for easy  
setting and a quick  
troubleshooting



## MAIN FEATURES

Models	XSDC5EZ428
Torque	4 Nm
Speed	28 rpm
Power	46 W
Amps	2 A
Limit switch	Electronic
Max turns	55

## TECHNICAL DATA

Voltage	24 VDC
Duty rating	45 sec ON / 1 min OFF
Radio frequency	434.15 MHz
Protection	IP30
Working temperature	14°F / 104°F
Insulation class	III

## DIMENSIONS

Model	A
XSDC5EZ428	20.19

