

# M Screen Chroma™

High Performance | 3% openness



## Specifications

Item Number 038503  
 Product Category High Performance  
 Fabric Style Rib Weave  
 Openness Factor 3%  
 Composition 36% Fiberglass / 64% Vinyl, Ultra-fine layer of aluminum  
 UV Blockage Approximately 97%  
 Standard Packaging Rolls of 33 ly (30 lm)  
 Width 112 in (285 cm)  
 Weight 12.0 oz/yd<sup>2</sup> (405 g/m<sup>2</sup>) ±5%  
 Thickness .018 in (0.46 mm) ±5%

## Classifications

Fire Classifications NFPA 701-10 TM#1, California U.S. Title 19  
 CAN/ULC-S109-03 Small & Large Flame Test  
 Bacterial & Fungal Resistance ASTM E2180, ASTM G21  
 Environment RoHS - Lead Free, GREENGUARD Gold  
 Acoustic NRC 0.25, SAA 0.23

## Fabrication

**Cutting:** Cold, Ultrasonic or Crush | **Welding:** Do not use radio frequency or high frequency welding machines. Heat impulse welding equipment is recommended.  
 We recommend testing all cutting and welding methods prior to use to confirm they meet your individual fabric specifications.

## M Screen Chroma™

ITEM	COLOR	SIDE*	FABRIC			FABRIC + GLASS		Emissivity		
			thermal Total Solar	Ts   %	optical Rv   % Tv   %	commercial SHGC % Improvement	residential SHGC			
030010	Charcoal/Sable	Streetside	85	13	3	83	3	68	0.15	0.11
		Roomside	72	87	1	13	1	21	0.58	0.85
002002	White/White	Streetside	84	11	5	82	5	68	0.16	0.11
		Roomside	73	23	4	78	4	63	0.23	0.88
002020	White/Linen	Streetside	85	11	4	82	4	68	0.15	0.10
		Roomside	66	30	4	69	4	58	0.27	0.88
007002	Pearl/White	Streetside	85	11	4	83	4	68	0.15	0.11
		Roomside	51	45	4	53	3	45	0.37	0.89
007007	Pearl/Pearl	Streetside	84	14	2	82	1	68	0.15	0.11
		Roomside	38	61	1	40	1	37	0.45	0.88
030001	Charcoal/Grey	Streetside	85	13	2	83	2	68	0.14	0.11
		Roomside	9	90	1	9	1	18	0.60	0.88
030030	Charcoal/Charcoal	Streetside	86	11	3	83	3	68	0.15	0.11
		Roomside	5	92	3	6	2	16	0.81	0.89

\*Roomside: identified by the fabric side; Streetside: identified by the coated side.

## Warranty Care & Handling

10 Year Interior

**Storage:** Fabric needs to be stored in cardboard tubes to prevent bowing of the fabric or the inner core that the fabric is wrapped around.

**Transportation:** Fabric should be shipped in the same cardboard tubes, or carefully bulk packaged to avoid crushing of the fabric.

**Handling:** Fabric should always remain in its native outer packaging during storage, and/or moving. The fabric should be carried with an even distribution across the length of the roll. Cotton gloves should be worn when handling and fabricating blind, as perspiration, dirt, etc. can permanently affect the aluminum backing.

**Placement:** Please maintain a minimum of 1 inch between finished shade and glass. Skylights require greater space between finished shade and glass to avoid thermal heat buildup.

The fabric performance tests were conducted in accordance with ASTM E991 & ASTM E903-96: Solar Transmittance (Ts), Solar Reflectance (Rs), Solar Absorbance (As), Visible Reflectance (Rv), and Visible Transmittance (Tv). Glass performance tests for Solar Heat Gain Coefficient (SHGC) were conducted using the Lawrence Berkeley National Laboratory Window NFRC certified software. SHGC % improvement for commercial applications is based on a standard commercial glass makeup of Double Glazing 6 mm / 1/4" air / 6 mm with low E on surface #2. SHGC for residential applications is based on a default residential glass makeup of 3mm clear glass / 1/2" air / 3mm clear glass. Results for SHGC were obtained using the center of glass. Emissivity was tested in accordance with ASTM C1371. Acoustical performance was tested in accordance with ASTM C425-09a; NRC is Noise Reduction Coefficient, SAA is Sound Absorption Average. For up-to-date test results, performance specifications and larger samples, contact the Mermet Technical Department at [www.mermetusa.com](http://www.mermetusa.com).

Mermet Corporation  
 5970 N. Main Street ■ Cowpens, SC 29330  
 Ph 1.866.902.9647 ■ [info@mermetusa.com](mailto:info@mermetusa.com)

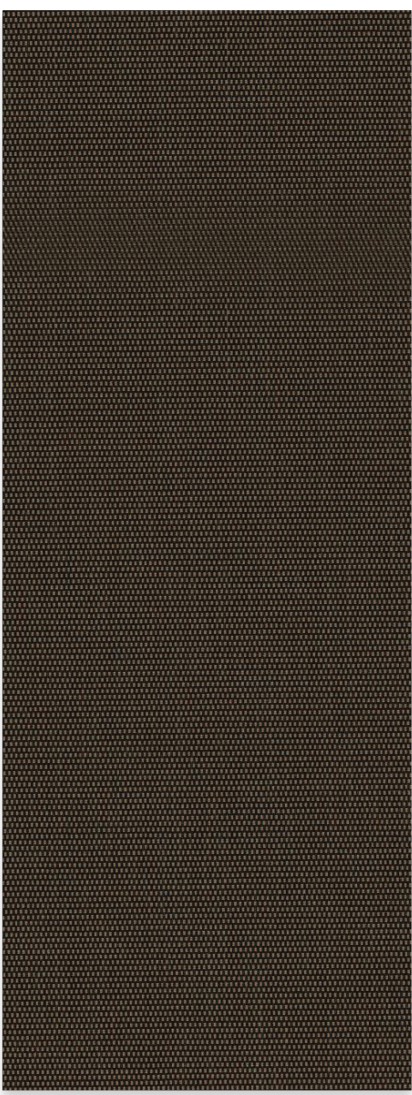
[mermetusa.com](http://mermetusa.com)



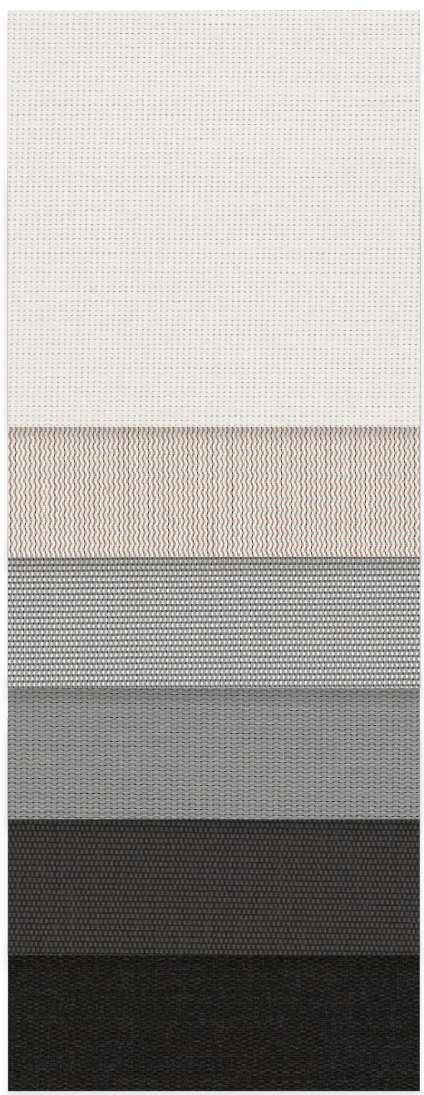
[www.shadesbymatiss.com](http://www.shadesbymatiss.com) | T. 800 493 2040 | email: [info@shadesbymatiss.com](mailto:info@shadesbymatiss.com)

# M Screen Chroma™

High Performance | 3% openness



3% 030010 | Charcoal/Sable



002002  
White/White

002020  
White/Linen

007002  
Pearl/White

007007  
Pearl/Pearl

030001  
Charcoal/Grey

030030  
Charcoal/Charcoal

## Pushing Fabric Performance to Its Limits

Achieving excellence in performance requires building on the foundation of previous successes and making each layer more resilient than the last. M Screen Chroma embodies this design philosophy through its popular, rib-weave construction – now enhanced with a proprietary metalized coating that reflects up to 86% of all solar radiation. Not only does M Screen Chroma's coating push the limits for solar reflection, but it provides scratch resistant protection and a hydrophobic finish to improve overall durability.



## A Modern Approach to Metallization

- Proprietary, metalized coating for better scratch resistance
- Hydrophobic finish repels water and oils for better durability

## When Occupant Comfort Counts Most

- Industry-leading in solar reflectance (Rs) for maximum heat control
- Unmatched glare control in light colored fabrics for optical comfort

