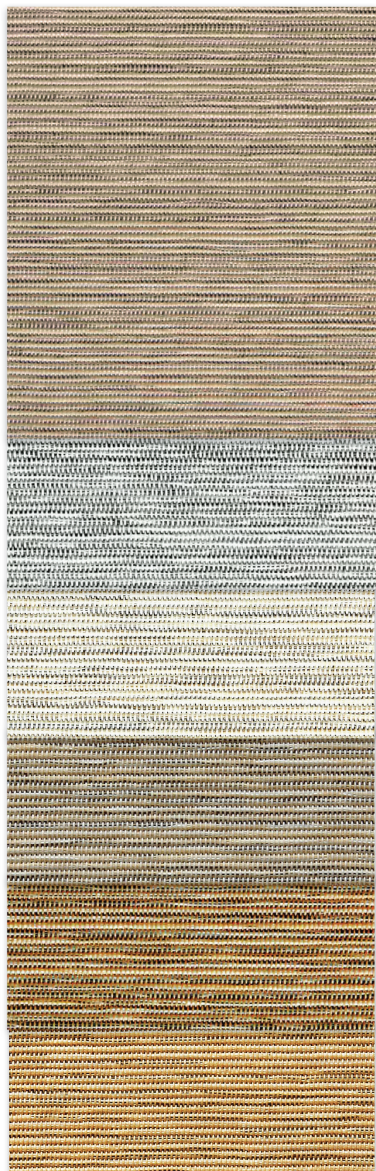


S Screen™

Decorative | 1% 4% openness



0070C1
Granite

0020D2
Marble

0020D1
Porcelain

0200C1
Jute

0100C2
Cork

0100N5
Papyrus



0610P6
Sesame

0100B6
Ginger

0100P1
Nougat

0610B2
Coffee Bean

0070B1
Peppercorn

0020P1
Seasalt

Fabrics sampled on waterfall are 4% openness.

Multicolor Texture, Reminiscent of Natural Grasscloth

S Screen decorative shade fabrics achieve a dynamic and alluring effect with any window. The use of bundled fiberglass core yarns wrapped in a polyester thread within the fabric's construction stimulate depth with an enhanced texture. By undulating the varied yarn colors in S Screen's weave process, Mermet is able to provide a shade fabric reminiscent of the look and feel of a high-end, natural textile. Available in two openness factors, S Screen provides a balance between sophisticated decor and solar performance control.



A Dynamic and Alluring Effect





S Screen™

Decorative | 1% 4% openness

Specifications

Item Number	1% 001601 4% 001604
Product Category	Decorative
Fabric Style	Plain Weave
Openness Factor	1% & 4%
Composition	33.6% Fiberglass / 59.6% Vinyl / 6.8% Polyester
UV Blockage	Approximately 96%-99%
Standard Packaging	Rolls of 23 ly (21 lm)
Width	98 in (250 cm), 122 in (310 cm)
Weight	1% 19.10 oz/yd ² (646 g/m ²)±5% 4% 18.9 oz/yd ² (642 g/m ²)±5%
Thickness	1% 0.041 in (1.04 mm)±5% 4% 0.037 in (0.93 mm)±5%

Classifications

Fire Classifications

NFPA 701-10 TM#1, California U.S. Title 19,
CAN/ULC-S109-03 Small & Large Flame Test

Bacterial Resistance Environment

ASTM E2180, ASTM G21
RoHS - Lead Free, GREENGUARD Gold

Acoustic

1% NRC 0.25, SAA: 0.26 | 4% NRC 0.15, SAA: 0.14

Fabrication

Cutting: Cold, Ultrasonic or Crush | **Welding:** Radio Frequency, High Frequency, Impulse, Hot Air or Wedge
We recommend testing all cutting and welding methods prior to use to confirm they meet your individual fabric specifications.

S Screen™

ITEM	COLOR
007C1	Granite
0020D2	Marble
0020D1	Porcelain
0200C1	Jute
0100C2	Cork
0100N5	Papyrus
00610P6	Seasame
0100B6	Ginger
0100P1	Nougat
0610B2	Coffee Bean
0070B1	Peppercorn
0020P1	Seasalt

Warranty

Care & Handling

Mermet Corporation
5970 N. Main Street ■ Cowpens, SC 29330
Ph 1.866.902.9647 ■ info@mermetusa.com

mermetusa.com



www.shadesbymatiss.com | T. 800 493 2040 | email: info@shadesbymatiss.com

FABRIC

thermal Total Solar						optical						commercial SHGC% Improvement						residential SHGC					
Rs %		As %		Ts %		Rv %		Tv %		Interior		Exterior		Interior		Exterior							
1	4	1	4	1	4	1	4	1	4	1	4	1	4	1	4	1	4						
34	31	61	60	5	9	36	32	3	8	34	26	84	84	0.44	0.51	0.10	0.12						
56	48	36	42	8	10	60	51	6	9	47	39	84	84	0.33	0.41	0.10	0.11						
63	59	27	29	10	12	67	62	8	10	53	45	84	82	0.30	0.36	0.10	0.12						
46	43	45	46	9	11	48	44	7	9	39	34	82	82	0.39	0.44	0.12	0.12						
37	35	56	55	7	10	37	34	5	8	34	29	84	84	0.44	0.49	0.11	0.12						
39	38	54	51	7	11	39	37	5	9	34	29	84	82	0.43	0.48	0.11	0.12						
14	18	84	76	2	6	14	17	2	6	21	18	82	84	0.53	0.58	0.11	0.11						
33	36	62	55	5	9	33	33	4	6	32	26	84	84	0.45	0.49	0.11	0.11						
39	37	54	53	7	10	37	34	5	7	18	29	82	84	0.47	0.49	0.12	0.12						
10	14	87	80	3	6	10	12	2	5	18	16	82	84	0.55	0.60	0.12	0.11						
31	32	65	61	4	7	33	28	3	5	32	24	84	87	0.46	0.51	0.10	0.10						
62	54	29	35	9	11	63	54	6	9	50	39	87	84	0.31	0.39	0.10	0.11						

5 Year Exterior & 10 Year Interior

Remove dust with vacuum cleaner or compressed air. Do not scrub. Do not use solvents or any abrasive substance which might damage the coating of the fabric. Clean with a sponge or a soft brush dipped in soapy water using mild detergent. Rinse with clean water. Leave the blind down until completely dry. You can also very gently rub the fabric with a clean white pencil eraser to remove small stains.

The fabric performance tests were conducted in accordance with ASTM E891 & ASTM E903-06: Total Solar Transmittance (Ts), Total Solar Reflectance (Rt), Total Solar Absorbance (As), Visible Reflectance (Rv), and Visible Transmittance (Tv). Glass performance tests for Solar Heat Gain Coefficient (SHGC) were conducted using the Lawrence Berkeley National Laboratory Window NFRC certified software. SHGC % improvement for commercial applications is based on a standard commercial glass makeup of Double Glazing 6 mm / 1/8" air / 6 mm with low E on surface #2. SHGC for residential applications is based on a standard residential glass makeup of 3mm clear glass / 1/8" air / 3mm clear glass. Results for SHGC were obtained using the center of glass. Acoustical performance was tested in accordance with ASTM C423-09a: NRC is Noise Reduction Coefficient, SAA is Sound Absorption Average. For up-to-date test results, performance specifications and larger samples, contact the Mermet Technical Department at: www.mermetusa.com.

© 2019, Mermet Corporation, All right reserved, US and Foreign patents pending.

09.19.V1