

S Screen Naturals™

Decorative | 5% openness



000PYR
Pyrenees

000SIE
Sierra

000OLY
Olympus

000APP
Appalachian

000AND
Andes

000ADI
Adirondack



000DEN
Denali

000MAT
Matterhorn

000RAI
Rainier

000CAS
Cascade

000SHA
Shasta

000EVE
Everest

A New View on Texture

S Screen Naturals uses wrapped yarn bundles similar to Mermet's flagship S Screen line, but with a new woven structure that provides rich texture to the fabric. Special yarns were incorporated to give a subtle sheen to the fabric while enhancing the effect of natural daylight and mimicking the appearance of woven wood shades when backlit. This results in a uniquely textured shade fabric that transmits beautifully controlled lighting and perfectly complements the natural colors in ones home.



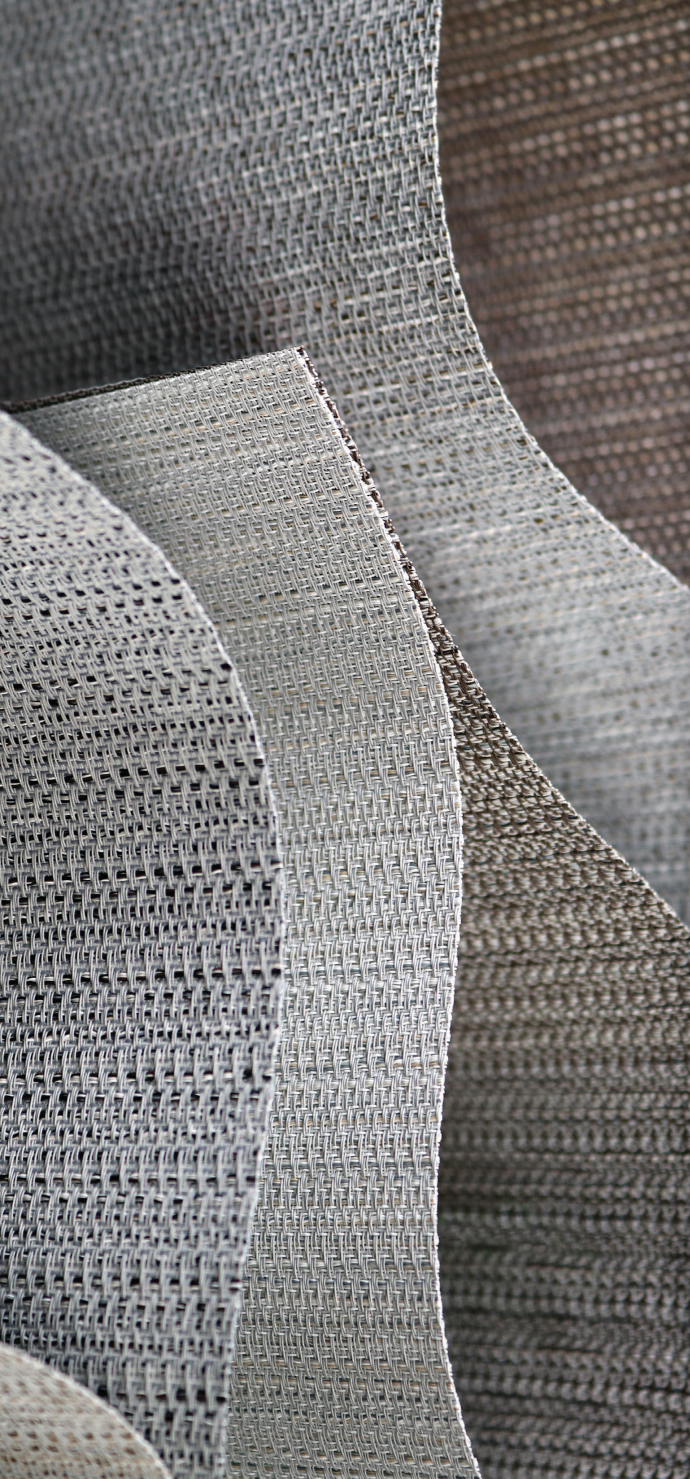
Beauty and Strength

With its decorative construction utilizing fiberglass core yarns, S Screen Naturals offers exceptional durability and dimensional stability— making it well suited for common interior and exterior building environments.

- HPD available
- RoHS compliant
- GREENGUARD Gold
- Fire rated



www.shadesbymatiss.com | T. 800 493 2040 | email: info@shadesbymatiss.com



S Screen Naturals™

Decorative | 5% openness



Specifications

| | |
|--------------------|---|
| Item Number | 001705 |
| Product Category | Decorative |
| Fabric Style | Fancy Weave |
| Openness Factor | 5% |
| Composition | 33.6% Fiberglass / 59.6% Vinyl / 6.8% Polyester |
| UV Blockage | Approximately 95% |
| Standard Packaging | Rolls of 23 ly (21 lm) |
| Width | 98 in (250 cm) |
| Weight | 15.0 oz/yd ² (510 g/m ²) ±5% |
| Thickness | 0.042 in (1.06 mm) ±5% |

Classifications

| | |
|---|--|
| Fire Classifications | NFPA 701-10 TM#1, California U.S. Title 19, CAN/ULC-S109-03 Small Flame Test |
| Bacterial and Fungal Resistance Environment | ASTM E2180, ASTM G21 RoHS - Lead Free, GREENGUARD Gold |
| Acoustical Performance | NRC 0.05, SAA: 0.07 |

Fabrication

Cutting: Cold, Ultrasonic or Crush | **Welding:** Radio Frequency, High Frequency, Impulse, Hot Air or Wedge
We recommend testing all cutting and welding methods prior to use to confirm they meet your individual fabric specifications.

S Screen Naturals™

ITEM COLOR

| | |
|--------|-------------|
| 000PYR | Pyrenees |
| 000SIE | Sierra |
| 000OLY | Olympus |
| 000APP | Appalachian |
| 000AND | Andes |
| 000ADI | Adirondack |
| 000DEN | Denali |
| 000MAT | Matterhorn |
| 000RAI | Rainier |
| 000CAS | Cascade |
| 000SHA | Shasta |
| 000EVE | Everest |

Warranty

Care & Handling

Mermet Corporation
5970 N. Main Street ■ Cowpens, SC 29330
Ph 1.866.902.9647 ■ info@mermetusa.com

mermetusa.com



www.shadesbymatiss.com | T. 800 493 2040 | email: info@shadesbymatiss.com

| FABRIC | | | | | FABRIC + GLASS | | | | |
|------------------------|--------|--------|---------|--------|------------------------------------|----------|---------------------|----------|--|
| thermal Total Solar | | | optical | | commercial SHGC% Improvement | | residential SHGC | | |
| Rs % | As % | Ts % | Rv % | Tv % | Interior | Exterior | Interior | Exterior | |
| 63 | 18 | 19 | 68 | 18 | 53 | 74 | 0.32 | 0.17 | |
| 46 | 39 | 15 | 48 | 13 | 39 | 76 | 0.41 | 0.15 | |
| 35 | 51 | 14 | 36 | 12 | 32 | 76 | 0.46 | 0.16 | |
| 40 | 46 | 14 | 41 | 13 | 34 | 76 | 0.44 | 0.16 | |
| 18 | 74 | 8 | 19 | 8 | 24 | 79 | 0.53 | 0.14 | |
| 20 | 71 | 9 | 21 | 9 | 24 | 79 | 0.52 | 0.14 | |
| 58 | 26 | 16 | 63 | 15 | 47 | 76 | 0.34 | 0.15 | |
| 54 | 30 | 16 | 58 | 15 | 45 | 76 | 0.37 | 0.16 | |
| 37 | 51 | 12 | 38 | 10 | 34 | 79 | 0.45 | 0.14 | |
| 43 | 45 | 12 | 46 | 11 | 37 | 79 | 0.42 | 0.14 | |
| 35 | 54 | 11 | 36 | 9 | 32 | 79 | 0.46 | 0.14 | |
| 31 | 59 | 10 | 32 | 9 | 29 | 79 | 0.47 | 0.14 | |

5 Year Exterior & 10 Year Interior

Remove dust with vacuum cleaner or compressed air. Do not scrub. Do not use solvents or any abrasive substance which might damage the coating of the fabric. Clean with a sponge or a soft brush dipped in soapy water using mild detergent. Rinse with clean water. Leave the blind down until completely dry. You can also very gently rub the fabric with a clean white pencil eraser to remove small stains.

The fabric performance tests were conducted in accordance with ASTM E891 & ASTM E903-06; Total Solar Transmittance (Ts), Total Solar Reflectance (Rt), Total Solar Absorbance (As), Visible Reflectance (Rv), and Visible Transmission (Tv). Glass performance tests for Solar Heat Gain Coefficient (SHGC) were conducted using the Lawrence Berkeley National Laboratory Window NFRC certified software. SHGC % improvement for commercial applications is based on a standard commercial glass makeup of Double Glazing 6 mm / 1/8" air / 6 mm with low E on surface #2. SHGC for residential applications is based on a default residential glass makeup of 5mm clear glass / 1/8" air / 5mm clear glass. Results for SHGC were obtained using the center of glass. Acoustical performance was tested in accordance with ASTM C423-09a; NRC is Noise Reduction Coefficient, SAA is Sound Absorption Average. For up-to-date test results, performance specifications and larger samples, contact the Mermet Technical Department at: www.mermetusa.com

© 2019, Mermet Corporation, All right reserved, US and Foreign patents pending.

09.19.V1