

AUTOMATE™

WireFree Li-ion Q2.0

Rechargeable. Battery-powered. Efficient installation.
This wire-free motor's built-in rechargeable lithium-ion battery is perfect for small to medium shade applications.



BI-DIRECTIONAL COMMUNICATION

Automate Radio Communication utilizes two-way communication to provide up-to-date feedback on battery levels and shade positioning via the Automate Pulse 2 app.



ADJUSTABLE SPEED CONTROL

Three shade speed settings to suit your needs – faster for larger shades, slower for smaller. Features quiet operation when set to the lowest speed setting.



SIMPLIFIED SETUP

Whether using a remote control or app for shade setup, Automate programming instructions are streamlined to have your shades moving as quickly as possible.



FAVORITE POSITIONING

Add a programmable shade position in addition to the upper and lower limits that can be defined as your "favorite".



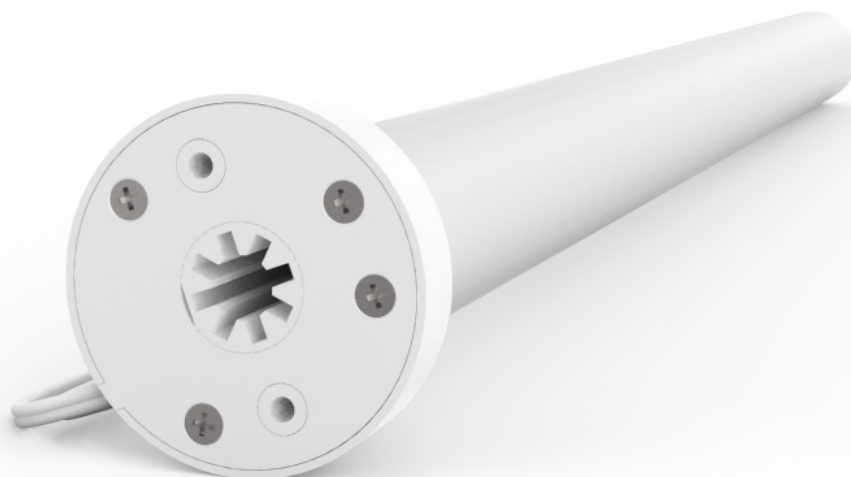
PRECISE LIMIT ADJUSTMENT

Incremental steps during limit setting allows for precise positioning of the shade.



QUIET OPERATION

Acoustically engineered to insulate sound.



5 YEAR WARRANTY



ARC™ (Automate Radio Communication) is Rollease Acmeda's proprietary technology utilising 433MHz radio communication with bi-directional feedback that brings Automate motorised shading systems together.

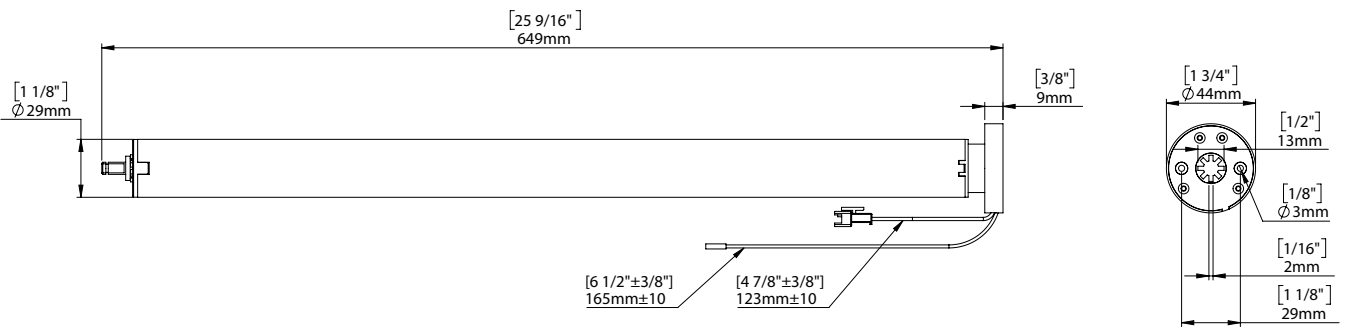
A DIVISION OF
**ROLLEASE
ACMEDA**

PRODUCT SPECIFICATIONS

Part #: MTDCBRFQ28-2 Automate WireFree Li-ion Q2.0

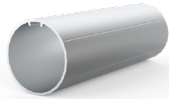
Voltage	12	Limit Switch Type	Electronic
Torque	2Nm	Current	1.16 A
Max Run Time	10 Min	Battery Size/Type	2600mAh
Speed	28 RPM (Adjustable to 24 or 20)	Temp Working Range	32°F to 140°F (0°C to 60°C)
Radio Frequency	433.92 MHz	Insulation Class	III
RF Modulation	FSK	Sound Level	~44dB
IP Rating	IP44		

DIMENSIONS



COMPATIBLE PARTS

Tubes



Crown & Drives



Adaptors



1 1/2"	MTCRDR-28-1.5
2"	MTCRDR-28-2
S45 Tube	MTCRDR-28-S45

- MTAD-25-28-SLV2W
- MTAD-252835-RS
- RB40-1402-069400

COMPATIBLE SYSTEMS

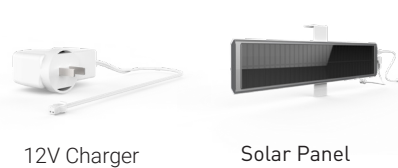
- Skyline Shades
- S45 Shades
- R Series Shades

COMPATIBLE PRODUCTS (refer to catalog for full item listings)

Controllers



Charging Options



Sensors

