

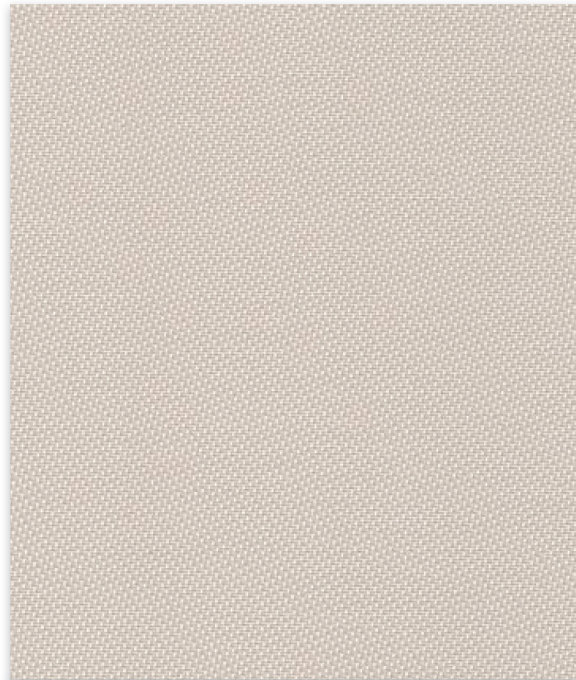
T Screen Naturals

Conventional | 3% 5% openness

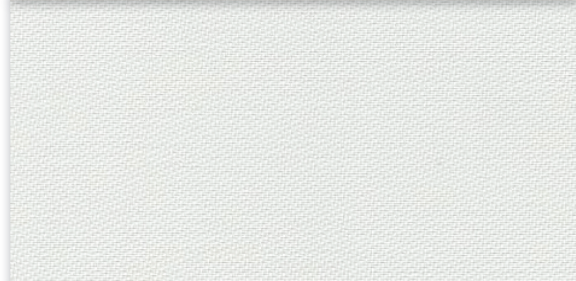


3%

002007 | Pebble



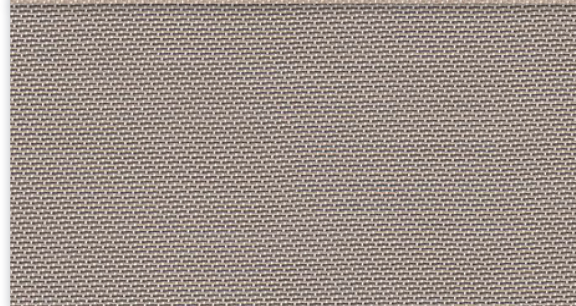
002020



002002



002010



00M164



5%

002007 | Pebble

Fabrics sampled on waterfall are 5% openness.

MERMET

Sun Control Textiles™



www.shadesbymatiss.com | T. 800 493 2040 | email: info@shadesbymatiss.com

Specifications

Item Number
Product Category
Fabric Style
Openness Factor
Composition
UV Blockage
Standard Packaging
Width
Weight
Thickness

3% 006703 | 5% 006705
Conventional
Satin
3% & 5%
36% Fiberglass | 64% Vinyl
Approximately 95%-97%
Rolls of 30 ly (27 lm)
122 in (310 cm)
3% 12.59 oz/yd² (427 g/m²) ±5% 5% 12.24 oz/yd² (415 g/m²) ±5%
3% 0.027 in (0.68 mm) ±5% 5% 0.028 in (0.71 mm) ±5%

Classifications

Fire Classifications

Bacterial & Fungal Resistance
Environment

NFPA 701-10 TM#1, California U.S. Title 19,
CAN/ULC-S109-03 Small Flame Test
ASTM E2180, ASTM G21
RoHS - Lead Free, GREENGUARD Gold

Fabrication

Cutting: Cold, Ultrasonic or Crush | **Welding:** Radio Frequency, High Frequency, Impulse, Hot Air or Wedge
We recommend testing all cutting and welding methods prior to use to confirm they meet your individual fabric specifications.

T Screen Naturals

ITEM	COLOR	SIDE*
002007	Pebble	Streetside Roomside
002020	Sand	Streetside Roomside
002002	Beach	Streetside Roomside
002010	Dune	Streetside Roomside
00M164	Horizon	Streetside

FABRIC										FABRIC + GLASS			
thermal Total Solar						optical				commercial SHGC % Improvement		residential SHGC	
Rs (%)		As (%)		Ts (%)		Rv (%)		Tv (%)					
3	5	3	5	3	5	3	5	3	5	3	5	3	5
61	56	26	30	13	14	66	60	11	12	50	45	0.34	0.38
40	36	46	49	14	15	42	38	12	13	32	29	0.46	0.49
65	61	16	17	19	22	69	64	16	19	50	45	0.33	0.36
56	53	24	24	20	23	58	55	17	20	42	39	0.39	0.41
69	68	11	9	20	23	74	73	18	21	53	53	0.31	0.32
69	68	11	9	20	23	74	73	18	21	53	53	0.31	0.32
62	57	22	26	16	17	65	59	13	14	47	42	0.34	0.38
45	41	38	41	17	18	44	39	14	15	34	29	0.44	0.47
58	51	30	35	12	14	62	55	11	12	45	39	0.36	0.40

*Roomside: identified by the fabric side; Streetside: identified by the coated side.

Warranty

5 Year Exterior & 10 Year Interior

Care & Cleaning

Remove dust with vacuum cleaner or compressed air. Do not scrub. Do not use solvents or any abrasive substance which might damage the coating of the fabric. Clean with a sponge or a soft brush dipped in soapy water using mild detergent. Rinse with clean water. Leave the blind down until completely dry. You can also very gently rub the fabric with a clean white pencil eraser to remove small stains.

The fabric performance tests were conducted in accordance with ASTM E891 & ASTM E903-96: Solar Transmittance (Ts), Solar Reflectance (Rs), Solar Absorptance (As), Visible Reflectance (Rv), and Visible Transmission (Tv). Glass performance tests for Solar Heat Gain Coefficient (SHGC) were conducted using the Lawrence Berkeley National Laboratory Window 7.3 NFRC certified software. SHGC % improvement for commercial applications is based on a standard commercial glass makeup of Double Glazing 6 mm / 1/2" air / 6 mm with low E on surface #2. SHGC for residential applications is based on a default residential glass makeup of 3mm clear glass / 1/2" air / 3mm clear glass. Results for SHGC were obtained using the center of glass. For up-to-date test results, performance specifications and larger samples, contact the Mermet Technical Department at: www.mermetusa.com.

Mermet Corporation
5970 N. Main Street ■ Cowpens, SC 29330
Ph 1.866.902.9647 ■ info@mermetusa.com

mermetusa.com

