

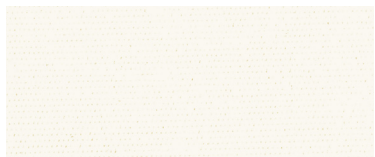
VASSO BO

VASSO BLACKOUT

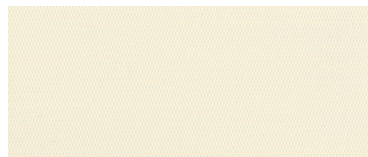
 **SHADES BY MATISS**



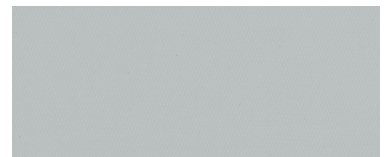
WHITE



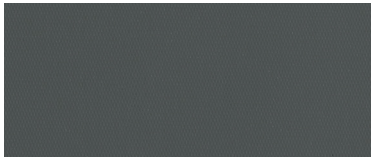
PEARL



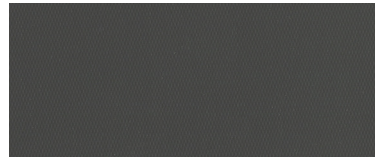
SAND



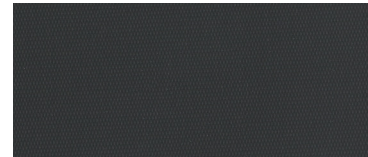
CONCRETE



GRANITE



SABLE



ONYX

Created for modern commercial interiors, Vasso Blackout delivers total privacy with a clean, professional finish. Its pure white backing and seven neutral colors provide a consistent appearance across hospitality, corporate, and multi residential projects. Made from PVC free materials and MA H4900 compliant, Vasso supports healthier interior environments. A durable, easy to clean surface ensures reliable blackout performance for demanding applications.

VASSO

BLACKOUT ROLLER SHADE CLOTH

SPECIFICATIONS

Property	BLACKOUT
Property	Blackout
Composition	100% Polyester with Acrylic Backing
Weight	10.18 oz/yd ² (345 g/m ²)
Thickness	0.014 in (0.35mm)
Light Fastness	> 5 (Blue Wool Scale)
Average Length	30 yd/roll (27m)

Fabrication Methods

Cutting Knife, Ultrasonic
 Railroading not recommended
 Welding Tape Recommended

Fire Classifications

NFPA 701

Environmental Certifications GREENGUARD Gold, Oeko-Tex Standard 100, Environmental Product Declaration, Health Product Declaration, Declare Label. RoHS & REACH

Applications Roller Shades, Panel Blinds

Warranty 10 years

Care & Cleaning

Lightly vacuum or wipe with dry cloth to remove dust. Wipe clean with warm soapy water and damp cloth.



Declare.