

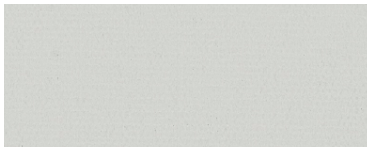
SPARTA TWILIGHT™



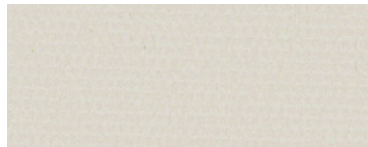
SPARTA TWILIGHT™ BLACKOUT

 **SHADES BY MATISS**

SPARTA TWILIGHT™ BLACKOUT is a classic blackout fabric composed of 100% polyester with an acrylic foam coating. Sparta Twilight™ provides complete privacy and is available at an affordable price. This fabric is ideal for use in offices, conference rooms, and other professional settings where privacy and light control are essential. The fabric is available in a variety of color options, including White White, Chalk White, Gypsum White, Pewter White, Emery White, Black White, Emery Emery, Pewter Pewter, and Black Black. The fabric is also available in a variety of widths and lengths to suit your needs. For more information, please contact our sales team at 1-800-333-3333 or visit our website at www.shadesbymatiss.com.



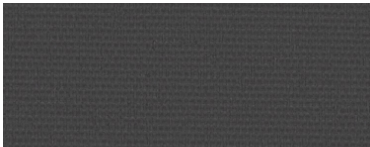
CHALK WHITE



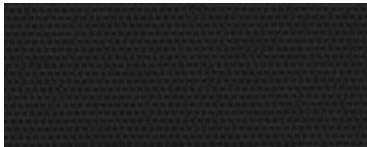
GYPSUM WHITE



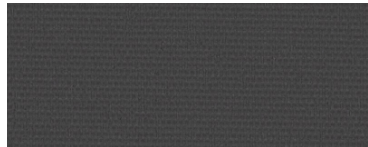
PEWTER WHITE



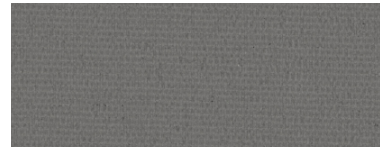
EMERY WHITE



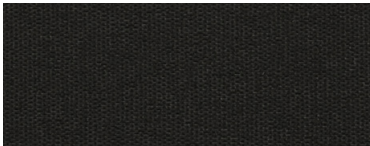
BLACK WHITE



EMERY EMERY



PEWTER PEWTER



BLACK BLACK

A classic blackout fabric composed of 100% polyester with an acrylic foam coating. Sparta Twilight™ provides complete privacy and is available at an affordable price.

SPARTA TWILIGHT™

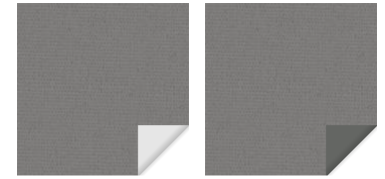
BLACKOUT

SPECIFICATIONS

Fabric Style	UV Blockage	Composition	Standard Roll Length	Warranty
Blackout	Approximately 100%	33% Polyester, 67% Acrylic	33 ly (30 lm)	5 Year Interior

SPARTA TWILIGHT™

Openness	Item No.	Width 78"	Width 98"	Width 126"	Weight (oz/ yd2)	Thickness (inches)
0% White Backing	W04942			Yes	9.9	0.014
0% Color Matched Backing	M04942			Yes	9.9	0.014



Pewter/White

Pewter/Pewter

Available Colors

White/White
 Chalk/White
 Gypsum/White
 Pewter/White
 Emery/White
 Black/White
 Pewter/Pewter
 Emery/Emery
 Black/Black



Sun Control Textiles™

Mermet Corporation
 5970 N. Main Street Cowpens, SC 29330
 1.866.902.9647 info@MermetUSA.com
 MermetUSA.com

Product performance and specification data is subject to change, visit www.Mermetusa.com for the most current information



SPARTA TWILIGHT™

PRODUCT SPECIFICATIONS SHEET

Sparta Twilight™ Blackout

Openness Factor	0%	Composition	33% polyester / 67% acrylic
UV Blockage	Approximately 100%	Standard Packaging	Rolls of 33 ly (30 lm)
Fabric Style	Blackout	Width	126" (320 cm)
Item # (White Backing)	W04942	Weight	9.9 oz/yd2 (336 g/m2) ±10%
Item # (Color Matched Backing)	M04942	Thickness	0.014" (0.35 mm) ±10%

White Backing			Fabric Properties						Fabric & Class			
			Thermal				Optical		Commercial		Residential	
Color #	Color Name	Side*	Rs IR (%)	Rs (%)	As (%)	Ts (%)	Rv (%)	Tv (%)	Interior SHGC % Improvement	Exterior SHGC Improvement	Interior SHGC Improvement	Exterior SHGC Improvement
				Total Solar								
016002	Chalk/White	street	68	73	27	0	81	0	63	0.22	100	0
016002	Chalk/White	room	63	64	36	0	68	0	55	0.28	100	0
042002	Gypsum/White	street	67	72	28	0	80	0	63	0.22	99	1
042002	Gypsum/White	room	70	72	28	0	78	0	61	0.23	99	1
001002	Pewter/White	street	66	72	28	0	79	0	63	0.23	100	0
001002	Pewter/White	room	16	18	82	0	39	0	37	0.47	100	0
070002	Emery/White	street	68	73	27	0	81	0	63	0.22	100	0
070002	Emery/White	room	9	9	91	0	9	0	18	0.55	100	0
060002	Black/White	street	66	72	28	0	80	0	63	0.22	100	0
060002	Black/White	room	4	4	96	0	4	0	16	0.57	100	0

Color Matched Backing			Fabric Properties						Fabric & Class			
			Thermal				Optical		Commercial		Residential	
Color #	Color Name	Side*	Rs IR (%)	Rs (%)	As (%)	Ts (%)	Rv (%)	Tv (%)	Interior SHGC % Improvement	Exterior SHGC Improvement	Interior SHGC Improvement	Exterior SHGC Improvement
				Total Solar								
002002	White/White	street	65	71	29	0	80	0	63	0.23	89	11
002002	White/White	room	70	75	25	0	84	0	66	0.2	89	11
001001	Pewter/Pewter	street	17	18	82	0	20	0	24	0.51	100	0
001001	Pewter/Pewter	room	16	18	82	0	20	0	24	0.51	100	0
070070	Emery/Emery	street	8	9	91	0	10	0	18	0.55	100	0
070070	Emery/Emery	room	9	9	91	0	9	0	18	0.55	100	0
060060	Black/Black	street	5	5	95	0	5	0	16	0.58	98	2
060060	Black/Black	room	4	4	96	0	4	0	16	0.58	98	2

*Room side: identified by the fabric side; Street side: identified by the coated side

Fabrication Methods:

Cutting: Crush, cold, or ultrasonic

Welding: Fabric welds without tape. Tape may improve weld strength. Mermet 103218 Tape. 325°F. 15s. Radio frequency, impulse, hot air, or wedge

We recommend testing all cutting and welding methods prior to use to confirm they meet your individual fabrication specifications.



Sun Control Textiles™
Mermet Corporation
5970 N. Main Street Cowpens, SC 29330
1.866.902.9647 info@MermetUSA.com
MermetUSA.com

Fire Classifications:

NFPA 701 TM#1, California U.S. Title 19
CAN/ULC-S109

Bacterial and Fungal Resistance:

ASTM E2180

Care and Cleaning

Remove dust with vacuum cleaner or compressed air. Do not scrub. Do not use solvents or any abrasive substance which might damage the coating of the fabric. Clean with a sponge or a soft brush dipped in soapy water using mild detergent. Rinse with clean water. Leave the blind down until completely dry. You can also very gently rub the fabric with a clean white pencil eraser to remove small stains. Handling: Support the full width of the roll to prevent uneven distribution of weight and fabric deformation.

Environmental Benefits:

RoHS – Lead Free
GREENGUARD Gold

Acoustical Performance:

NRC: 0.00, SAA: 0.02

Fabric properties may vary from the values reported due to standard variations in the manufacturing process. The fabric fenestration testing was conducted in accordance with ASTM G173 & ASTM E903: Total Solar Transmittance (Ts), Total Solar Reflectance (Rs), Solar Reflectance in Infrared (Rs IR), Total Solar Absorbance (As), Visible Reflectance (Rv), and Visible Transmission (Tv). Glass performance tests for Solar Heat Gain Coefficient (SHGC) were conducted using the Lawrence Berkeley National Laboratory WINDOW NFRC certified software. SHGC % improvement for commercial applications is based on a standard commercial glass makeup of Double Glazing 6 mm / 1/2" air / 6 mm with low E on surface #2. SHGC for residential applications is based on a default residential glass makeup of 3mm clear glass / 1/2" air / 3mm clear glass. Results for SHGC were obtained using the center of glass. Acoustical performance was tested in accordance with ASTM C423: NRC is Noise Reduction Coefficient; SAA is Sound Absorption Average. For up-to-date test results, performance specifications and larger samples, contact Mermet at info@MermetUSA.com.

Product performance and specification data is subject to change, visit www.Mermetusa.com for the most current information

