



ZipShade Medium Slim (F)

Installation instructions

ZipShade Medium Slim (F)

Index

1 • General	3
2 • Types of installation methods	3
3 • Installation of the empty box	6
4 • Installation method 7A & 7B	7
5 • Seal the box	12
6 • Electrical control	13
6.1 • The technical features of the motor	13
6.2 • The features of the electrical power connection	13
6.3 • In case of a black cable with UV resistant sheath (type: RR-F/RN-F)	13
7 • Somfymotor adjustment (upper/lower limits)	14
8 • Final check for a single screen	15
9 • Final check for a coupled screen	16
10 • Maintenance	17
11 • Discard of the product	18

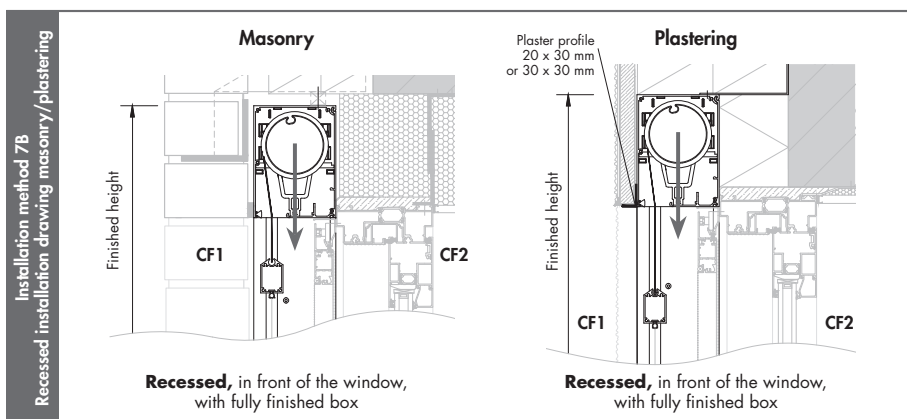
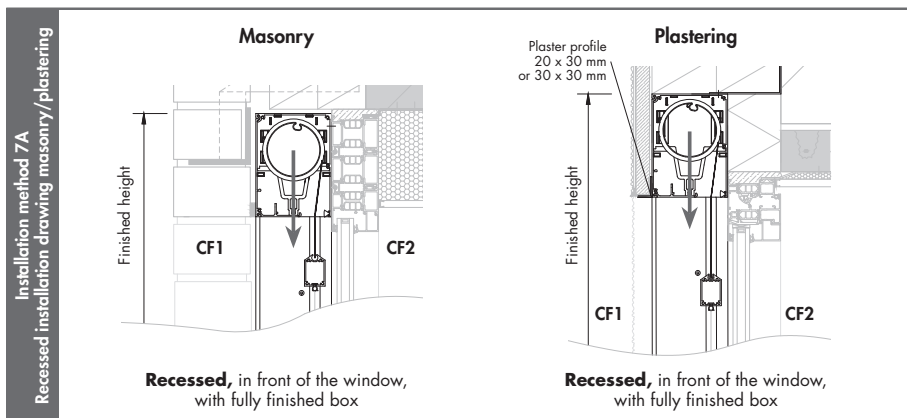
1 • General

ZipShade Medium Slim consists of:

- Square box with demountable fabric roller with motor control.
- Each screen system has a pair of identical side channels.
- High-value polyester or glass fibre fabric, with ZipShade-technology (windproof-technology thanks to the combination of a symmetrical zip and a patented wear-resistant H-PVC inner-rail).
- A retractable bottom bar, with extra load, which guarantees a fluent guidance of the fabric during rolling-up and rolling-down.

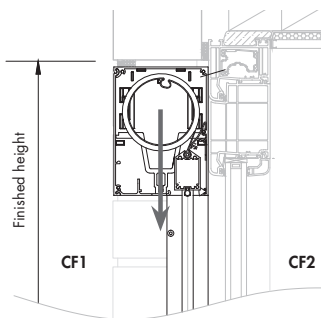
Please check if all parts are included in the packaging.

2 • Types of installation methods



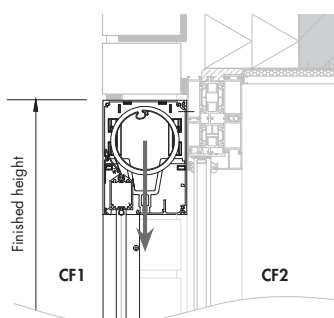
ZipShade Medium Slim (F)

Installation method 7A
Surface-mounted drawing masonry



Surface-mounted, in front of the window,
with fully finished box

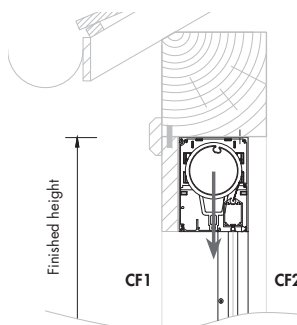
Installation method 7B
Surface-mounted drawing masonry



Surface-mounted, in front of the window,
with fully finished box

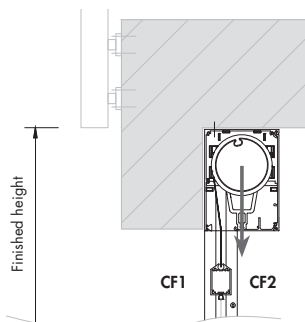
ZipShade Medium Slim F is mounted, in freestanding position, in combination with an existing terrace covering, balcony or Algarve® (extra fixation of the box is obligatory).

Installation method 7A F
Drawing wooden terrace covering



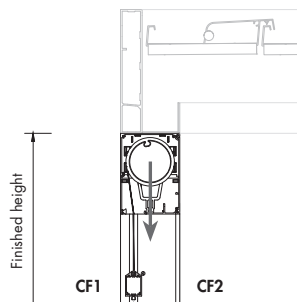
Freestanding without any construction behind,
with fully finished box

Installation method 7B F
Drawing balcony

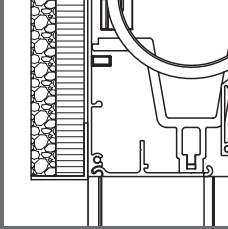


Freestanding without any construction behind,
with fully finished box

Installation method 7B F
Drawing Algarve



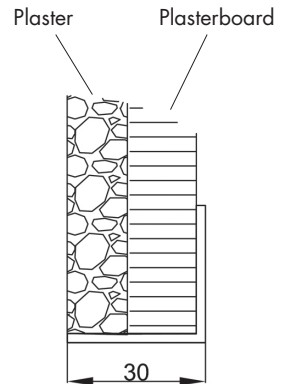
Freestanding without any construction behind,
with fully finished box



In case of finishing the facade with plaster, you will need to use the Renson® plasterprofile (30 mm x 20 mm or 30 mm x 30 mm). Never secure the plaster profile directly on the front cover of the box. Renson® obliges to always use a plaster profile, regardless of the width of the screen.

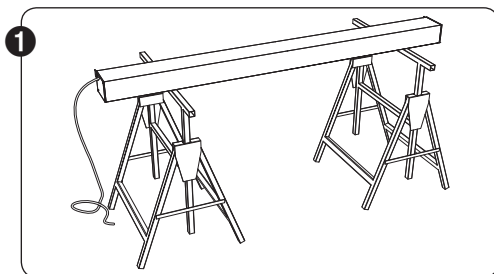
Processing instructions for plaster profile (installation method 7)

- Renson® provides 2 types of the plaster profile:
 - L-shaped
 - size: 30 mm x 20 mm or 30 mm x 30mm (thickness: 2mm)
- Renson® prohibits to directly secure the L-profile unto the front cover of the box
- Never directly plaster unto the front cover of the box! We oblige to always use a plaster plate, regardless of the width of the screen. Otherwise the risk of cracks in the plaster is too large. If you do not use an extra L-profile in combination with a plaster plate, Renson® is not taken responsible for eventual cracking in the plaster.
- Renson® is not liable for any damage/cracks that could be the result of expansion of the aluminium box (L-profile) or as a result of poor placement of the plaster.
- We strongly advise the installer to use waffled plasterboard: for example polystyrene plate (primer inclusive)

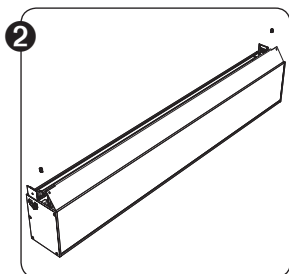


ZipShade Medium Slim (F)

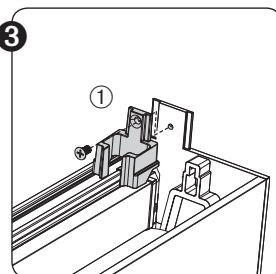
3 • Installation of the empty box



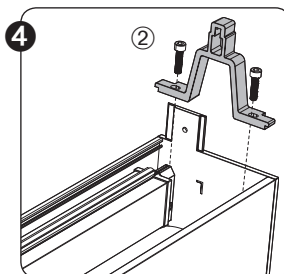
Take the box and the rolled fabric out of the packaging. Place the box on a mobile workbench. For a secure mounting, use and maintenance of your screen, you should take into account sufficient regulations (do not work on ladders and wear safety clothes and shoes).



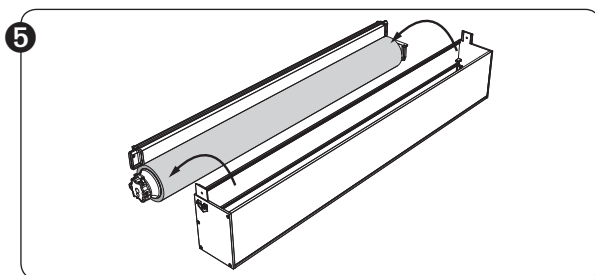
Demount the cover plate from the box. Place the cover plate at a dry place.



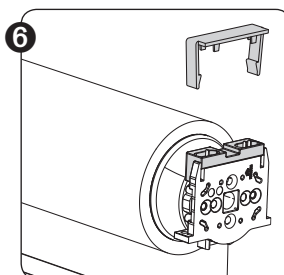
Unscrew the guiding piece ① which is used for guiding the bottom rail into the box.



Undo the U-piece ② in order to remove the fabric roller from the box.



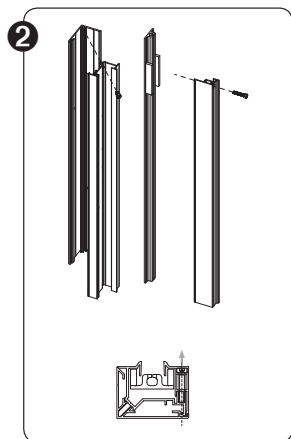
Pull gently the fabric roller out of the box, holding both ends of the box. Thanks to the Connect&Go® you do not have to struggle with the electric cable.



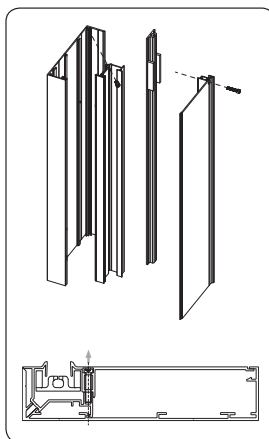
Install the black cover cap on the Connect&Go® plug, on the side of the fabric roller. This way, the connecting pins are protected.

4 • Installation method 7A & 7B

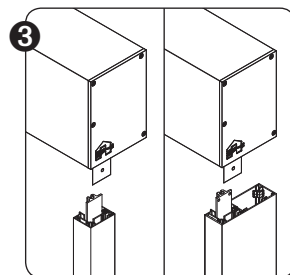
- 1 In case the power supply is taken from indoors, drill a hole of 10 mm, to gain access inside the building/construction, in function of location of cable feed: (B, F, H, N, W, & V).



Side channel 'G'



Side channel 'D'



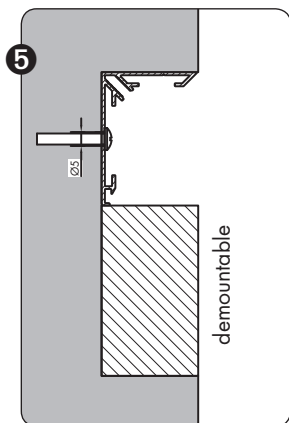
The PVC inner rail extends in comparison to the aluminium inner rail. In case the side channels are shortened, take into account the same overlength for the PVC inner rail!

- Demount the 3-part side channels and in case of a coupled screen also the coupling side channel.
 - Use an Allen key nr. 3 to unscrew the front part of the side channels.
- 4 The back part of the side channel is not pre-drilled. The intermediate part of the side channel is pre-drilled. As an installer you need to drill the holes for the back part.
 - The holes are pre-drilled sequential over a distance of 250 mm. Allow a distance of 750 mm between two sequential holes for the assembly.
 - The drillings need to be done as straight as possible to guarantee a good fastening of the side channels (certainly in case of high wind load).

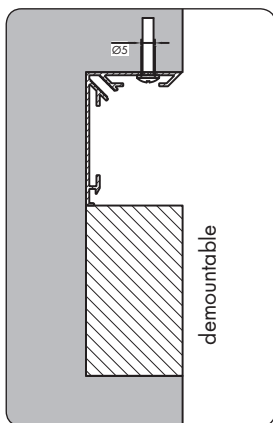
In case of side channel 'D' we strongly advise to drill the hole from the outside. Take into account that in case of Installation method 7 (hidden installation), the side channels are integrated into the façade.

ZipShade Medium Slim (F)

INSTALLATION METHOD 7A

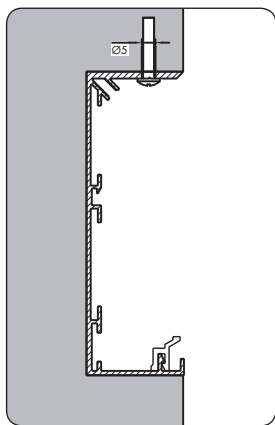


Mounting of side channel 'G' (Ø5 mm)

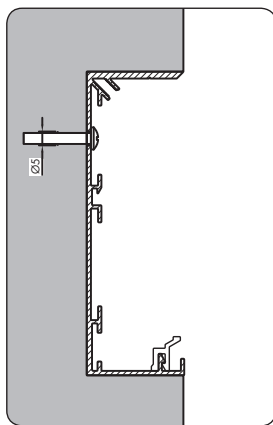


Mounting of side channel 'G' sideways (Ø5 mm)

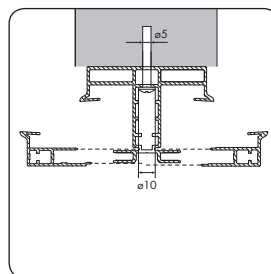
Attention: To be able to disassemble the fabric roller from beneath, the client must foresee something underneath the box that can be dismantled when choosing the narrow side channel G. This with a minimal width of the box minus the depth of the narrow side channel and minimal height of 800 mm (with a maximal width of 4,000 mm in case of a single screen).



Mounting of side channel 'D' through the backside (Ø5 mm)

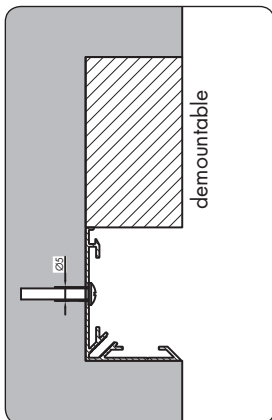


Mounting of side channel 'D' sideways (Ø5 mm)

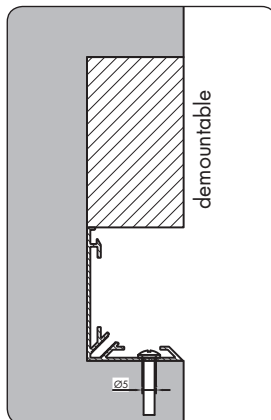


Mounting of coupling side channel 'K'

INSTALLATION METHOD 7B

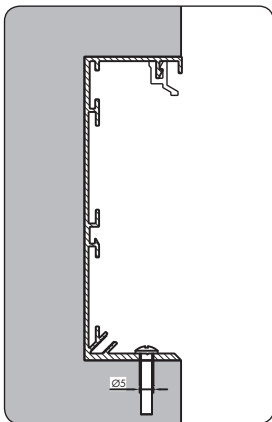


Mounting of side channel 'G' (Ø5 mm)

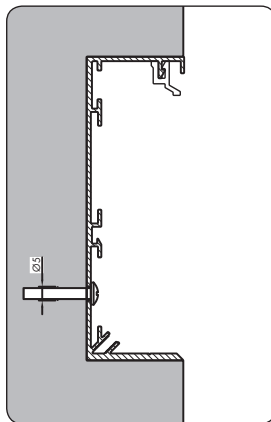


Mounting of side channel 'G' sideways (Ø5 mm)

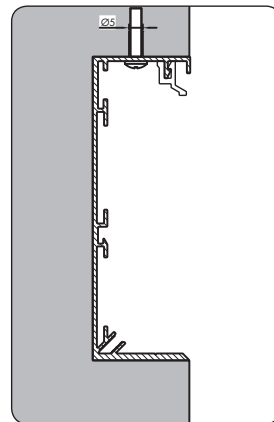
Attention: To be able to disassemble the fabric roller from beneath, the client must foresee something underneath the box that can be dismantled when choosing the narrow side channel G. This with a minimal width of the box minus the depth of the narrow side channel and minimal height of 800 mm (with a maximal width of 4,000 mm in case of a single screen).



Mounting of side channel D (Ø5 mm)



Mounting of side channel D sideways (Ø5 mm)



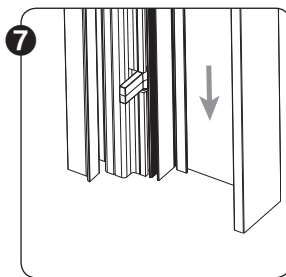
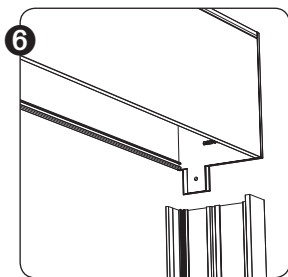
Mounting of side channel D (Ø5 mm)

Warning!

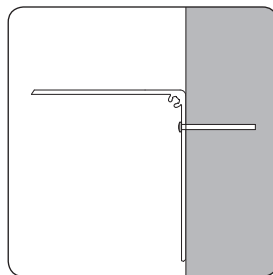
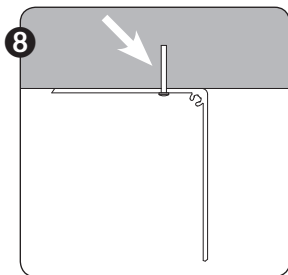
In case the box is installed with the fabric away from the window (for example in case a mosquito screen is installed between the window and the screen/fabric). Pay attention that the window can be opened in the full width/height in order to adjust the upper and lower limits in case of a mechanical motor!

- o Single screen: Limit adjustment at the side of the motor

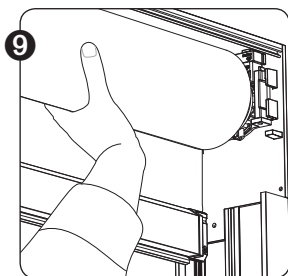
ZipShade Medium Slim (F)



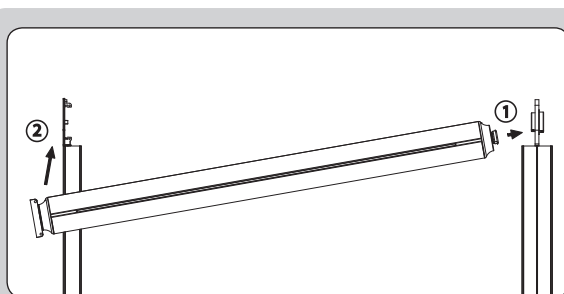
Install the empty box on the rear side channels and screw these side channels with Allen key 2,5 (DIN 915 M5x10). Respect the position of the side channels. The fixing click system is below the side channel. Caution: make sure the cable is not blocked somewhere.



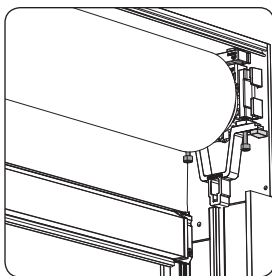
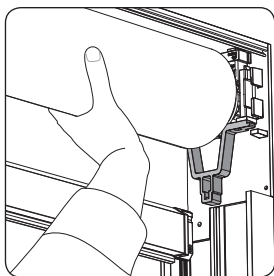
The box must always be fixed as shown on the drawing. Fix as close as possible until the ends of the box (see drawing). Use rings to fix. When you fix in the middle of the box, you have to use recessed screws to avoid the tube roller to drag against the screw when the screen is unrolled.



Slide the fabric roller back into its original position, with the screen downward. Support the bottom bar while doing this. Thanks to Connect&Go® this handling goes smoothly.

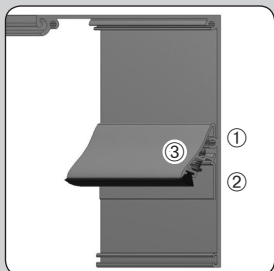


For a coupling side channel, first fit the fabric roller into coupling piece ①. Then slide the roller into support piece ② and secure the support piece to the end covers. Support the bottom bar while doing this.



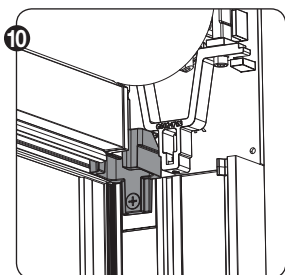
Attention! Hold the fabric roller in its position during remounting. Don't forget to support the bottom bar. Reposition the U-piece & secure it. Tighten the screws of the U-piece.

Warning: In case of a Detecto Motor you have to install the fabric guide profiles.

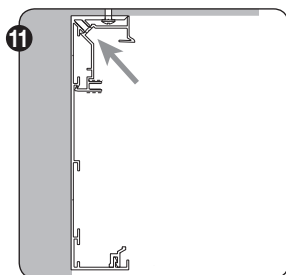


Position the fabric guide profiles:

1. This profile is positioned behind the fabric and hooks over the screw channel.
 2. Position the profile in the corner flush with the profile of the rear cover.
 3. Use a Phillips screwdriver to tighten the screws at the bottom of the profile.
- Afterwards, give one pull on the profile to check if it is secure.

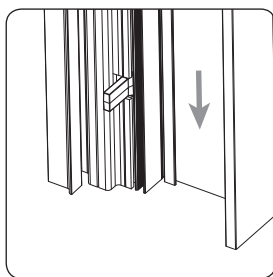
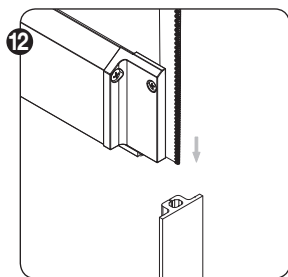


Screw the guiding piece (for guiding the side channels) back in its former position.



- Re-install the intermediate part of the side channel in the back part of the side channel.
- These 2 parts need to be positioned tightly enough to each other before screwing.

ZipShade Medium Slim (F)

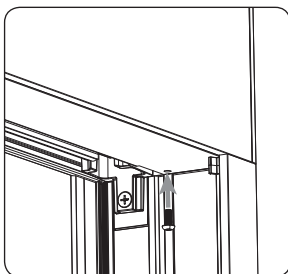


Slide the fabric into the internal HPVC channel.

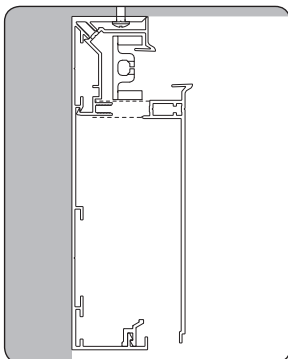
Be sure to observe the correct direction of the side channels!

Make sure the V cut-out is positioned at the top of the side channel and the clicker is positioned at the bottom of the side channel.

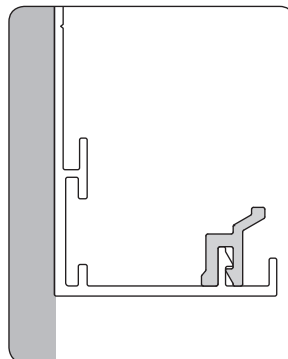
5 • Seal the box



With a single screen or a coupled screen: close the box with the cover below the box and fix this to the reversed U-brackets on both sides of the box, by means of the 2 screws near the supporting endpieces with a torx screwdriver (DIN 7985 TX-M4x10 – A2).



- Install the front part of the side channel and fix it.
- Check if the screen glides freely and without any tension in the plastic side channels.
- During the setting of the motor you have to set an end point at the top and bottom.



Pay attention!

The bottom bar is retractable. So pay attention that the bottom bar does not hit the fabric on the fabric roller.

In case of a deep side channel, the front part is supported by black clips, applied each 400 mm.

6 • Electrical control

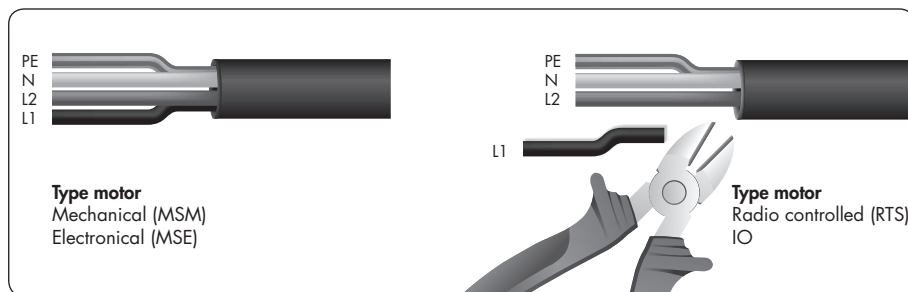
6.1 • The technical features of the motor

Category	Rating
Power supply	120 Volt AC - 60 Hz
Current	0.95 to 2.1 Amps (depends on motor type)
Output	110 to 250 Watt (depends on motor type)
Protection class	IP 44
Max. operating time	Approx. 5 minutes

6.2 • The features of the electrical power connection

Category	Rating
Residual-current device	300 mA
Circuit breaker	10 Ampère (Max. 8 Motors per circuit breaker) (See specifications for rated current of the motor.)

6.3 • In case of a black cable with UV resistant sheath (type: RR-F/RN-F)



In case of a radio-controlled motor (RTS) or IO Home motor, the black core needs to be cut (the black core does not have a functionality in case of this type of motors).

Codification cores:	
Blue core	N (Neutral)
Black core	L1 (Direction 1)
Brown core	L2 (Direction 2)
Yellow and green core	PE (Earth)

ZipShade Medium Slim (F)

7 • Somfymotor adjustment (upper/lower limits)

ADJUST UPPER AND LOWER END POINT SETTING AGAIN!

The upper and lower end point is adjusted in the factory.

Adjusting upper end point:

The upper end point is adjusted in the factory of Renson. The bottom bar including sealing strip will no longer be visible. Adjust the upper end point for end use.

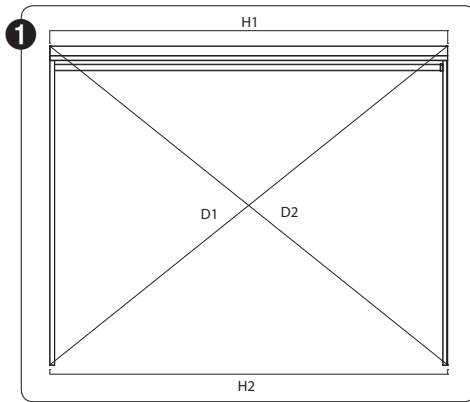
Adjusting lower end point:

The lower end point is adjusted at ± 400 mm from the bottom of the box. Adjust the lower end point completely until the bottom of the screen, with a margin of 10 mm (for the sealing strip). The adjustment depends of the motor type.

Tip:

In case the electricity works take place after the assembly of the screen, a temporary power cable can be used to set the end points of the solar protection.

8 • Final check for a single screen



Before starting the motor, check if the set-up is square. The diagonals (D1 and D2) and parallels (H1 and H2) should be as equal as possible for the fabric to properly unwind.

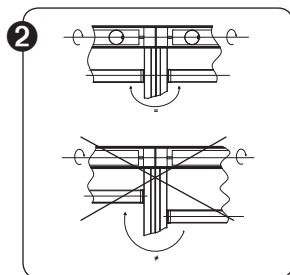
$$D1 = D2 \text{ and } H1 = H2$$

- ② Put back the front section of the side channels and coupling side channel (Allen key no. 3).
- ③ If the motor cable is visible and installed outdoors, the cable needs to be protected by conduit or trunking which is sun resistant.
- ④ Check if the end points are set. If they are not set, set the end points so the motor automatically stops in the desired highest and lowest position.
- ⑤ Make sure to set the lower end point at a few mm from the end of the side channels so the fabric remains at the correct tension.
- ⑥ Check if all screws, bolts and nuts are firmly tightened.
- ⑦ Roll the screen up and down several times to ensure proper operation.

ZipShade Medium Slim (F)

9 • Final check for a coupled screen

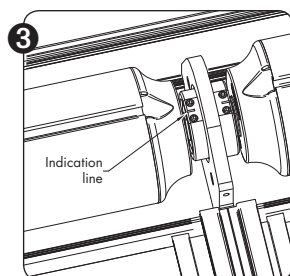
- 1** See point 8.1.



Check if the bottom rails are positioned at the same height.

If this is not the case, then this can be adjusted on the fabric roll which does not have any motor. These must be linked symmetrically, i.e. the fabric slots of the 2 fabric rolls must face each other.

The fabric must likewise be turned up an equal number of turns so that the two bottom rails face each other.



Loosen the hex socket screws on the side of the fabric roll bearing and rotate it so that the fabric slots face each other.

Make sure the indication line on the coupling piece never goes outside the designated area on the fabric tube prop.

Re-tighten the hex socket screws.

- 4** Fit the front part of the (coupling) side channels (hex key 3). Check if the end points are set. If these are not set, set the end points so that the motor stops automatically in the desired highest and lowest position.
- 5** Make sure to set the lower end point at a 10 mm from the end of the side channels so that the fabric remains at the correct tension.
- 6** Let the bottom rail drop to its lowest position.
Check if both bottom rails are positioned at the same height.
If this is not the case, then go back to point 9.2.
- 7** Check if all screws, bolts and nuts are firmly tightened.
- 8** Roll the screen up and down several times to ensure proper operation.

10 • Maintenance (See also our warranty certificate*)

The system does not need much maintenance, but for years of enjoyment, we advise the following:

- If the fabric becomes wet in a sudden storm, you can still roll it up and unroll it later to dry when the weather is better. However, avoid having the wet fabric rolled up for more than three days to prevent formation of mould and spots.
- Before cleaning, remove any loose dirt with a brush or vacuum cleaner. You can then use a cleaning product (avoid caustic products) and warm water to remove the remaining dirt. Always rinse the fabric after cleaning. Avoid cleaning in full sunlight: if soapy water dries quickly, it can leave spots on the fabric.

Do not use aggressive abrasives.

- Crystal screen may only be cleaned with clean lukewarm water ($\pm 30^{\circ}\text{C}$)
- If anodised or enamelled profiles become dirty, they can be cleaned with warm water and a gentle-acting cleaning product. Never use aggressive products, abrasive sponges or other abrasive media. We also advise against using high-pressure equipment.
- Swivelling or rotating parts should be lubricated annually. Use a dry lubricant for this (Veidec Dry Lube (G6002790)).
- After cleaning (remove twigs and leaves), plastic sliding sleeves can be lubricated with a dry lubricant (Veidec Dry Lube (G6002790)).
- Frequently control your product on twigs, leaves, bird nests, etc. and remove them. Maintain the product "as a good keeper".
- As the manufacturer, we recommend having a regular technical inspection by your installer: Annually at public utility building and at your private home.
- Always use original parts from the manufacturer.

Important to know:

- The main connection should be made by a qualified electrician in accordance with applicable standards.
- Minor colour variations may occur during the manufacturing process between the colour guides and the profiles of the sunprotection screen. There may also be minor colour differences between components and profiles.
- The fabric may exhibit slight colour nuances and imperfections.
- Because the fabric is rolled up, it can form folds or creases.
- Fabrics that contain crystal windows can expand, shrink and/or show folds or creases caused by differences in temperature or fabric tension.
- Over time, the colour of the fabric / crystal window may fade slightly, depending on the chosen colour and design.
- In the case of straight screens, where the fabric hangs down vertically because of the weight of the bottom rail or a tensioning system, wrinkles can form in the fabric depending on the type of screen

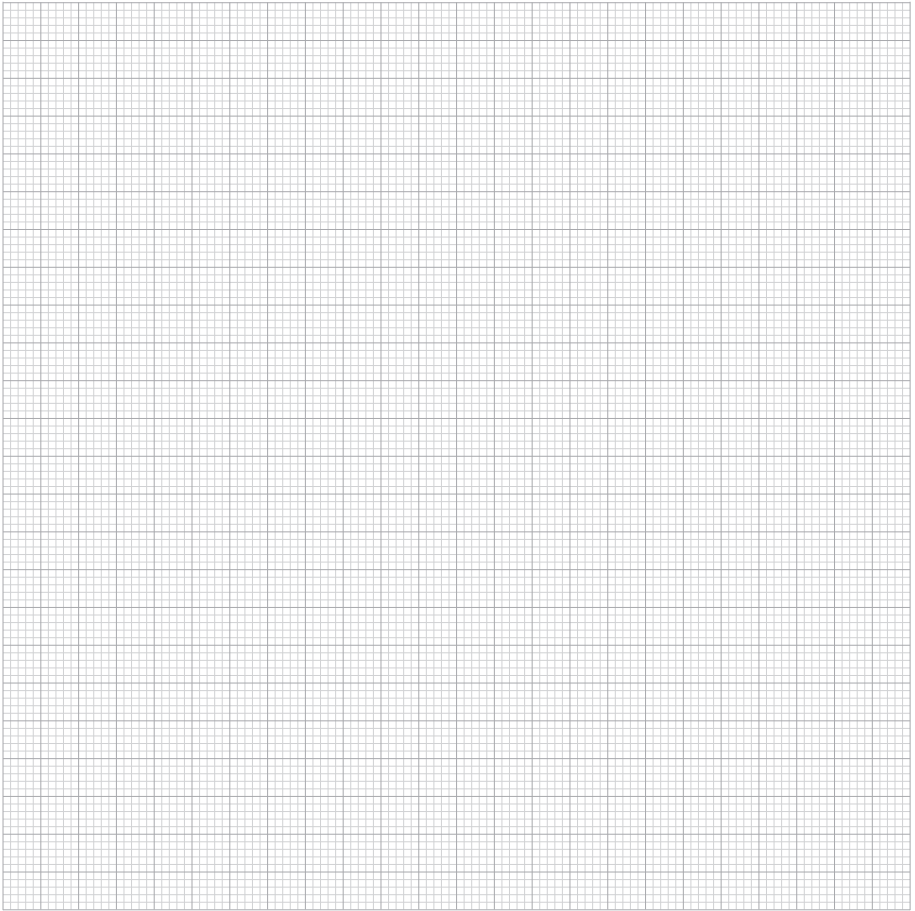
* This information does not replace the warranty certificate.

ZipShade Medium Slim (F)

11 • Discard of the product

Your screen can fully be recycled. You should inform yourself about the environmental regulations in your city or recycling station. If you demount your screen, it should be tensionless.

The materials should be separated by the product's destruction. Combustible materials should be separated from non-combustible materials by the product's destruction.





Creating healthy spaces

Renson®: your partner in ventilation and sun protection

Renson®, headquartered in Waregem (Belgium), is a trendsetter in Europe in natural ventilation and sun protection.

- **Creating healthy spaces**

From 1909, we've been developing energy efficient solutions assuring a healthy and comfortable indoor climate. Our remarkable headquarters - built according to the 'Healthy Building Concept' - is a beautiful example portraying our corporate mission.

- **No speed limit on innovation**

A multidisciplinary team of more than 90 R&D employees continually optimize our products and develop new and innovative concepts.

- **Strong in communication**

Contact with the customer is of the utmost importance. A group of 100 in-the-field employees worldwide and a powerful international distribution network are ready to advise you on site. EXIT 5 at Waregem gives you the possibility to experience our products on your own and provides necessary training for installers.

- **A reliable partner in business**

We can guarantee our customers optimal quality and service thanks to our environmentally friendly and modern production sites (with automated powder coating line, anodisation line, uPVC injection molding machinery and mold making shop) covering an area of 95.000 m².

Dealer



Renson® reserves the right to make technical changes to the products shown.
The most recent versions of our brochures can be downloaded from www.renson.eu

VENTILATION

SUNPROTECTION

OUTDOOR

Renson® Headquarters

Maalbeekstraat 10 • IZ 2 Vijverdam • B-8790 Waregem • Belgium

Tel. +32 (0)56 62 71 11 • info@renson.be • www.renson.eu



Creating healthy spaces

SHADES BY MATISS