

INTEGRATION GUIDE



CRESTRON **HOME**

INTEGRATION for
TAHOMA® RTS



TABLE OF CONTENTS

I.	OVERVIEW -----	3
	INTRODUCTION	
	RESOURCES & APPLICATIONS	
II.	SETUP -----	4
	SYSTEM REQUIREMENTS	
	CONNECTIONS & INDICATORS	
	SYSTEM CONFIGURATION	
	ADD TAHOMA DRIVER TO WORKSPACE	
	PAIR DEVICES	
	ADD TAHOMA INTERFACE DEVICE TO ROOM	
	ADD TAHOMA BLIND DEVICE TO ROOM	
	ADD TAHOMA BLIND DEVICE TO ROOM	
	APPENDIX -----	9
	A. AVAILABLE COMMANDS & ACTIONS	

I. OVERVIEW

INTRODUCTION

The Somfy Organization strength has been demonstrated with 50 years of experience in motorization. Leaders in the shading industry with innovation and modernization solutions for homes and commercial buildings, Somfy offers the widest range of strong, quiet motors and controls for all types of applications and technologies.

Who is this Guide for?

This guide is aimed at providing support and guidance to Crestron® Integrators for achieving complete automation of Radio Technology Somfy® (RTS) motors and the Somfy TaHoma® Smartphone and Tablet Interface.

What does this Guide contain?

The sections of this guide contain walkthroughs and methods of controlling RTS motors using the TaHoma® Smartphone and Tablet Interface as the bridge between the AV System and Smart Shading by Somfy.

This guide discusses common methods of integration with Crestron Home™.

For questions or assistance please contact technical support:

(800) 22-SOMFY (76639)

technicalsupport_us@somfy.com

How should this Guide be used?

This guide is intended to be used as a reference manual.

RESOURCES & APPLICATIONS

Visit www.somfypro.com for the following guides:

- [Somfy TaHoma Smartphone and Tablet Interface Programming Guide](#)
 - [Somfy RTS Pocket Programming Guide](#)

Subscribe to the Somfy YouTube Channel www.youtube.com/somfysystems

Visit the Google Play or iOS App Store for the Somfy TaHoma North America App:



Google Play Store



iOS App Store

II. SETUP

The Somfy TaHoma® Smartphone and Tablet Interface provides a single platform for Somfy RTS and future ecosystems with a wide range of interior and exterior applications.

- The TaHoma® Interface supports up to 40 RTS channels
- Install up to 10 interfaces as zone controllers to increase the RTS range
- The TaHoma® can support a maximum of 40 scenes with schedules per install

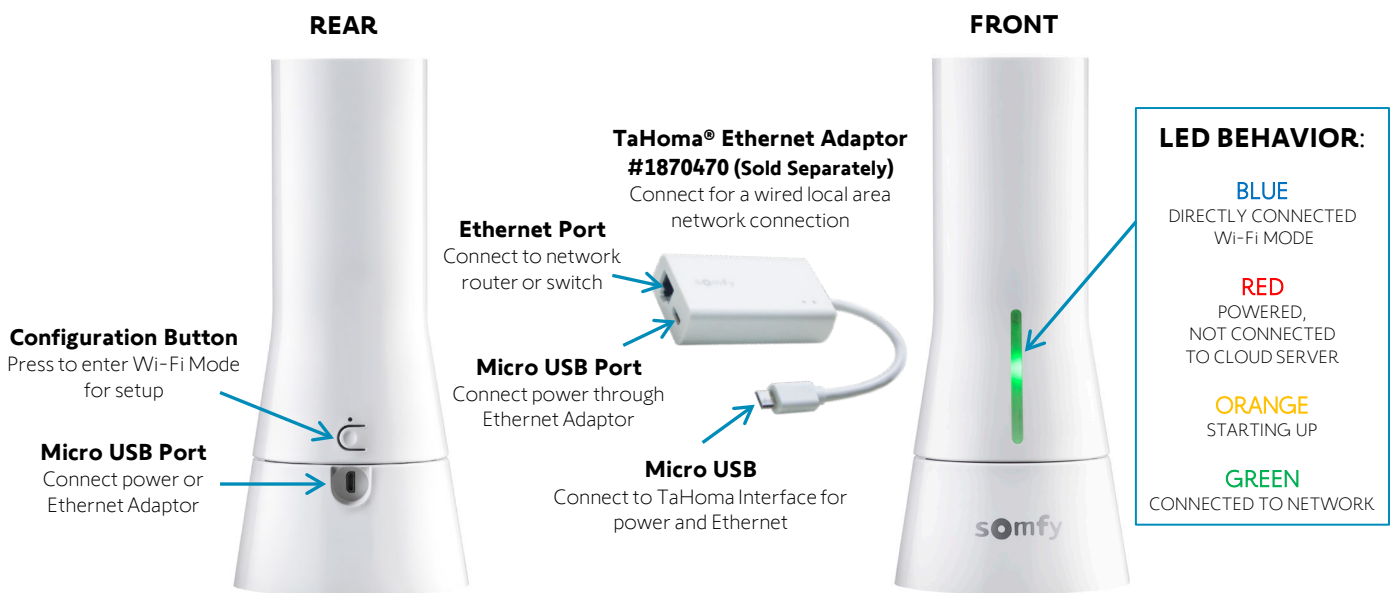
Each TaHoma Interface is connected to Wi-Fi or directly to the local area network by an optional Ethernet adaptor for IP Integration with third-party control systems. TaHoma® is compatible with the Somfy Synergy™ API.

Details of this controller and commissioning instruction are available in the Somfy TaHoma Smartphone and Tablet Interface Programming Guide.

SYSTEM REQUIREMENTS

PC running Windows 10 or higher
Crestron Toolbox Software
Crestron Home Setup Software
Crestron Home App
Somfy TaHoma Interface Driver

CONNECTIONS & INDICATORS



SYSTEM CONFIGURATION

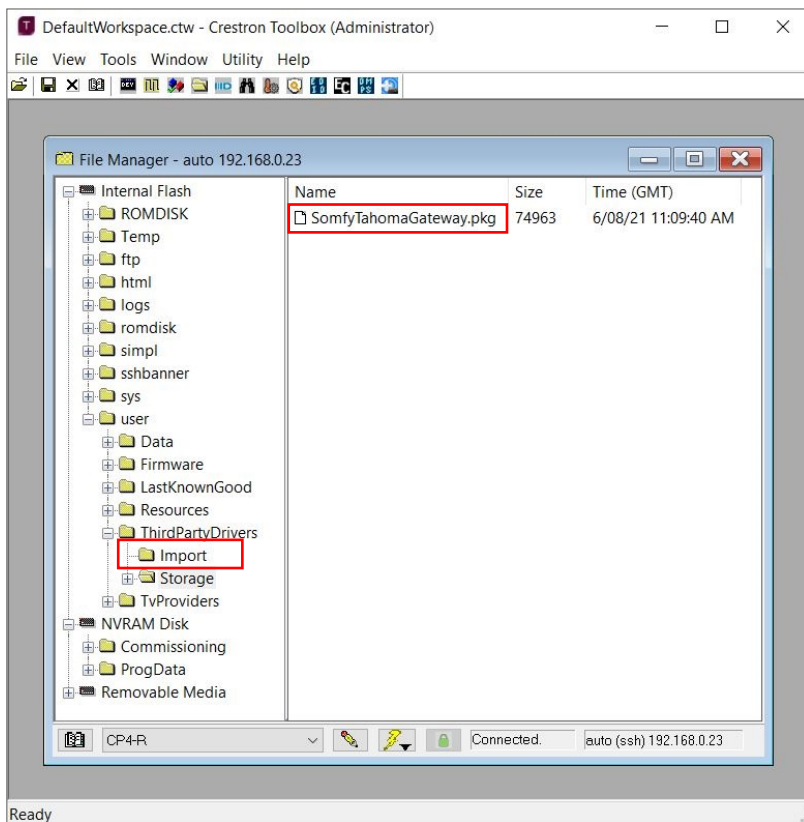
A fully operational TaHoma system is required prior to Crestron programming. The TaHoma Interface supports up to 40 channels of RTS. RTS devices programmed to an RTS channel will only receive commands from the associated TaHoma Interface. Interfaces must be placed within 25-35' of the RTS devices they control.

- Confirm with Shade Commissioning Agent that the TaHoma Interface firmware is up to date
- An Integration Report is generated in the TaHoma App which will include the TaHoma Interface PIN and IP address
 - Third-Party Integration and must first be enabled in the TaHoma App

ADD TAHOMA DRIVER TO WORKSPACE

A fully operational TaHoma system is required prior to Crestron programming. Third-Party Integration must be enabled in the TaHoma App.

- 1) Download the Somfy TaHoma Gateway driver package from the Crestron Marketplace
- 2) In Crestron Toolbox, OPEN File Manager and Workspace
- 3) Once connected to the Crestron Home control processor, PLACE the Somfy TaHoma driver into the Internal Flash > user > ThirdPartyDrivers > Import folder



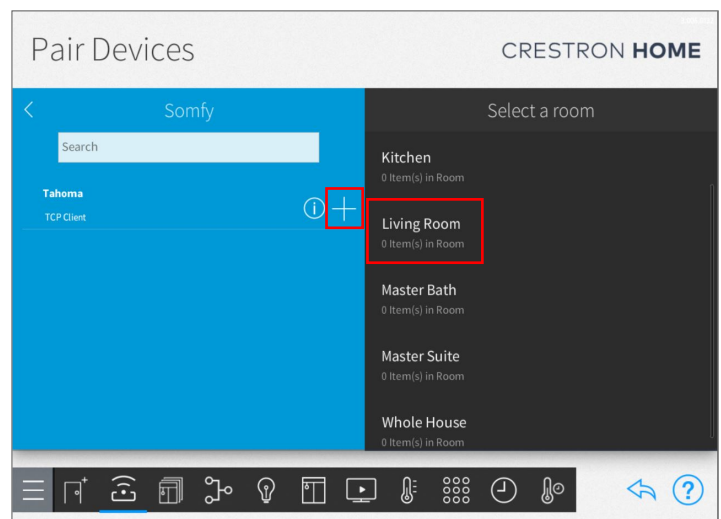
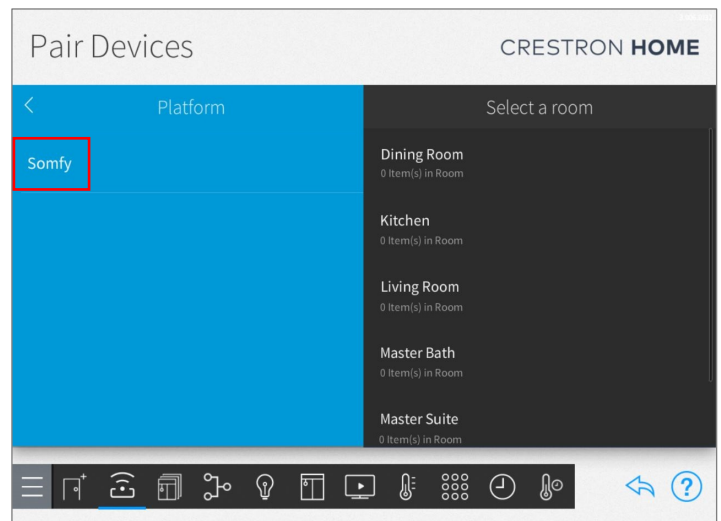
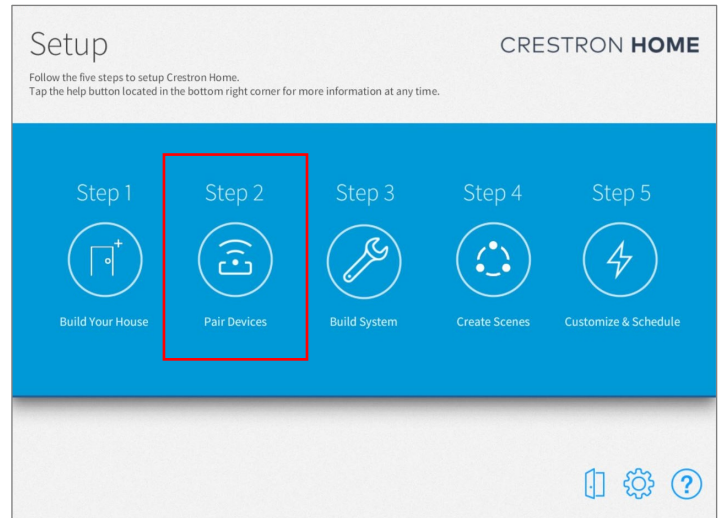
- 4) Restart the Crestron Home control processor

PAIR DEVICES

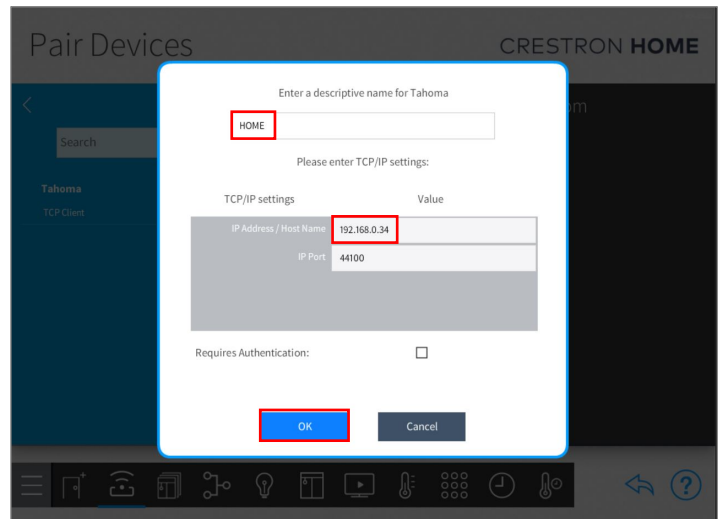
Third-Party Integration must be enabled in the TaHoma App. Reference the Integration Report for the TaHoma Interface IP address. Ensure that a MAC-based address reservation is being used.

ADD TAHOMA INTERFACE DEVICE TO ROOM

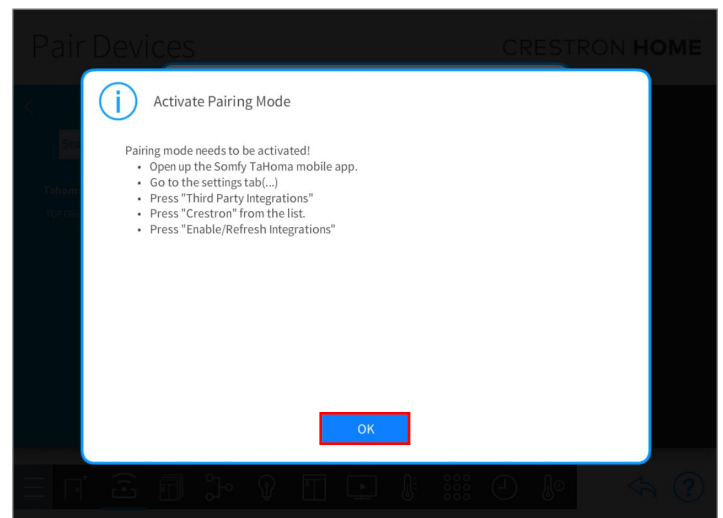
- 1) Confirm Third-Party Integration for Crestron is enabled in the TaHoma App:
 - Open the TaHoma App
 - SELECT "Menu" from the bottom right-hand corner
 - SELECT "Third-Party Integrations"
 - SELECT "Crestron"
 - SELECT "Enable/Refresh integrations"
- 2) In the Crestron Home Setup software, first complete Step 1 of adding rooms to Build Your House
- 3) SELECT "Step 2" to Pair Devices
- 4) In Pair Devices, select:
 - SELECT "Drivers"
 - SELECT "Platform"
 - SELECT "Somfy"
- 5) SELECT a room where the TaHoma Interface is located
- 6) SELECT the + icon to add the TaHoma to the selected room



- 7) Enter a descriptive name for the TaHoma
- 8) Enter the IP address of the TaHoma, SELECT "OK"

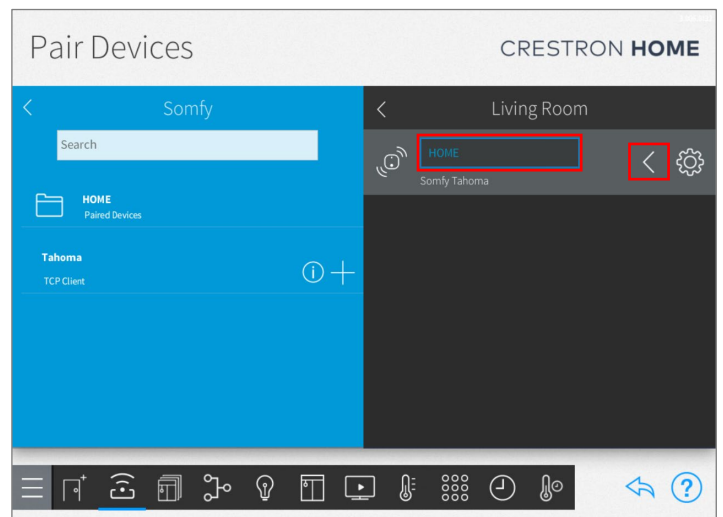


- 9) At the Activate Pairing Mode prompt, follow the steps to enable integration, SELECT "OK"



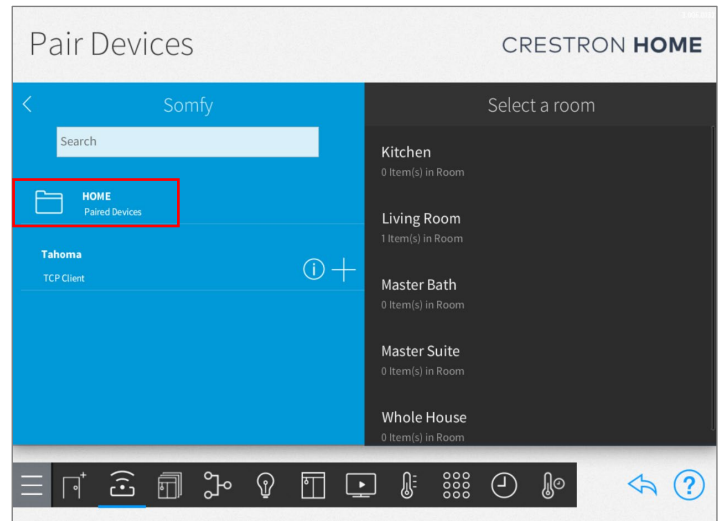
In a multiple TaHoma installation, repeat Step 5 for each additional TaHoma Interface

- Rename a TaHoma by typing in the device name field
- Remove a device by clicking the left arrow

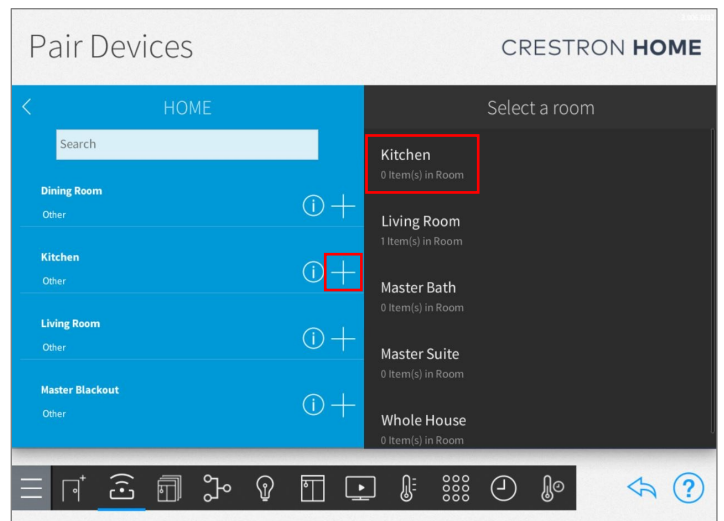


ADD TAHOMA BLIND DEVICE TO ROOM

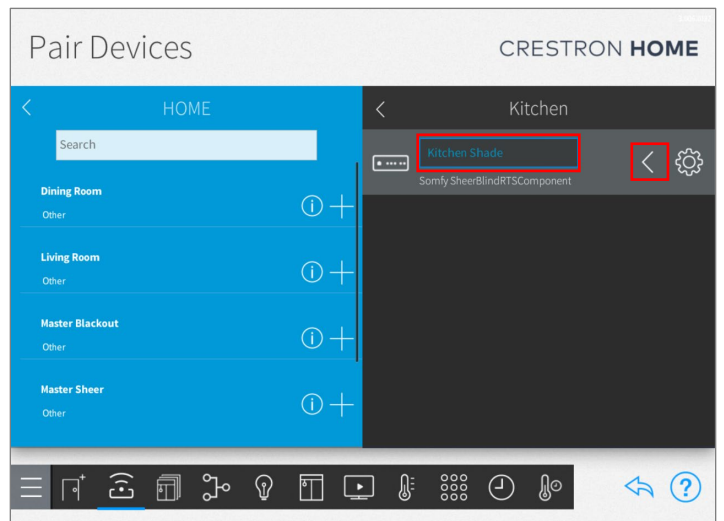
- 1) Open the TaHoma Paired Devices folder
The "Pair Devices" folder contains all devices already created in the Somfy TaHoma App.



- 2) SELECT a room for where a Paired Device is located, SELECT "+" icon to add the device to the appropriate room



- 3) Enter a descriptive name for the TaHoma Blind device, SELECT "OK"
 - Rename a device by typing in the device name field
 - Remove a device by selecting the left arrow
- 4) Use the Crestron Home App to test device operation



See Appendix A of this guide for a list of Somfy TaHoma specific commands and actions. RTS motors do not report positional feedback. RTS motors are capable of one programmable "My" or favorite position that requires a Stop command when the motor is at rest. Use the Crestron Home App Favorite button to achieve the My position command.

APPENDIX

[APPENDIX A] AVAILABLE COMMANDS & ACTIONS

TAHOMA RTS BLIND	
Open	Moves blind to the fully open position
Close	Moves blind to the fully closed position
Stop	Stops blind when moving
My	Moves blind to the programmed My position if blind is at rest

ABOUT SOMFY

SOMFY® has been improving everyday life for more than 270 million people by designing and manufacturing intelligent motorization solutions for interior window coverings and exterior solar protections. Somfy innovates to automate and connect shades, blinds, draperies, awnings, rolling shutters, exterior screens & pergolas for commercial and residential buildings in 58 countries across the globe. With 170+ million motors produced over the last half century, Somfy is committed to creating reliable and sustainable solutions that promote the best way of living and well-being for all.

FOR QUESTIONS OR ASSISTANCE PLEASE CONTACT TECHNICAL SUPPORT:

(800) 22-SOMFY (76639)

technicalsupport_us@somfy.com

SOMFY SYSTEMS INC

SOMFY NORTH AMERICAN HEADQUARTERS

121 Herrod Blvd.

Dayton, NJ 08810

P: (609) 395-1300

F: (609) 395-1776

FLORIDA

1200 SW 35th Ave.

Boynton Beach, FL 33426

F: (561) 995-7502

CALIFORNIA

15301 Barranca Parkway

Irvine, CA 92618-2201

F: (949) 727-3775

SOMFY ULC

SOMFY Canada Division

5178 Everest Drive

Mississauga, Ontario L4W2R4

P: (905) 564-6446

F: (905) 238-1491

www.somfypro.com

A BRAND OF **SOMFY** GROUP

