

CHATEAU LF | BO

SHADES BY MATISS



LIGHT FILTERING (LF)

The Light Filtering fabric softly diffuses natural light while maintaining daytime privacy and creating a warm, inviting atmosphere



BLACKOUT (BO)

The Blackout fabric provides maximum light blockage for enhanced privacy, glare reduction, and room darkening performance.

CHATEAU LIGHT FILTERING | BLACKOUT



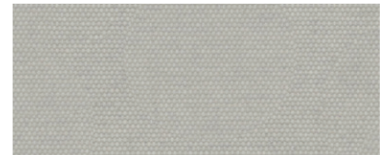
PORCELAIN



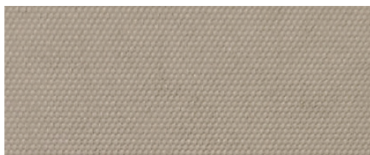
GYPSUM



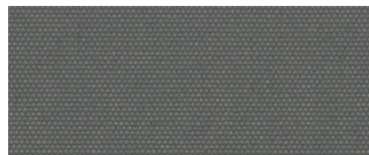
AMBER



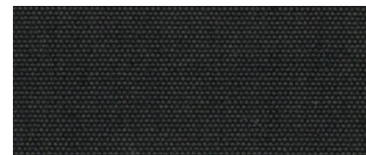
CASTLEROCK



CANYON



THUNDERSTONE



EBONY

Crafted for today's residential spaces, Chateau delivers a refined aesthetic with features that go far beyond the basics. Its soft light-filtering weave offers near-total privacy while gently diffusing natural light—ideal for bedrooms, bathrooms, and open-plan living. With superior fade resistance, eco-conscious certifications, and a wide 118" format that eliminates seaming, Chateau is as functional as it is beautiful. Available in seven curated shades, each with a color-matched backing for cohesive curb appeal, Chateau is the essential fabric for modern living.

CHATEAU

BLACKOUT | LIGHT FILTERING ROLLER SHADE CLOTH

SPECIFICATIONS

Specification	Light Filtering	Blackout
Composition	100% Polyester	100% Polyester
Coating	Stiffened with Acrylic	Blackout Coating with Acrylic Foam
Openness	Private (<1%)	Blackout
Width	118" (3m)	118" (3m)
Length	33 yd/roll (30m)	33 yd/roll (30m)
Weight	6.19 oz/yd ² (210g/m ²)	10.03 oz/yd ² (340g/m ²)
Thickness	0.012 in (.30mm)	0.018 in (.45mm)
Light Fastness	≥ 6 (Blue Wool Scale)	≥ 6 (Blue Wool Scale)

Fabrication Methods

Cutting Knife, Ultrasonic
 Railroading YES
 Welding Tape Recommended

Applications

Roller Shades, Panel Blinds

Warranty 5 years

Environmental Certifications Oeko-Tex Standard 100, RoHS

Care & Cleaning

Lightly vacuum or wipe with dry cloth to remove dust. Gently wipe clean with damp sponge. Do not soak. Avoid solvents or test them in inconspicuous area first.

